

**REQUEST DESIGN APPROVAL AND ADVERTISE FOR BIDS  
FOR  
PLANT SCIENCE RESEARCH SUPPORTY FACILITY  
SOUTH DAKOTA STATE UNIVERSITY  
OSE#R0315—62X**

**APRIL 2016**

---

**In accordance with the Board of Regents Policy 6.4 for Capital Improvements, South Dakota State University (SDSU) requests approval of the construction documents to issue for public advertisement of bidding. The approved project budget is \$4,500,000.**

This submittal is a result of the approved Facility Design Plan submitted to the Board of Regents in March of 2016. The scope of the project includes:

- 1) Construction of a new plant science research support facility. The facility will include approximately 17,000 square feet of research and support space. The program consists of laboratory, seed preparation, seed drying, storage, and office spaces.
- 2) The building cooling system has changed from a standalone chiller to a central chiller plant connection, since the FDP was approved. The A/E has estimated the additional cost of the change to be approximately \$38,000. The return on investment of the change is estimated to be less than five years. The central chiller plant connection will reduce maintenance cost and operate more efficiently than a standalone chiller.

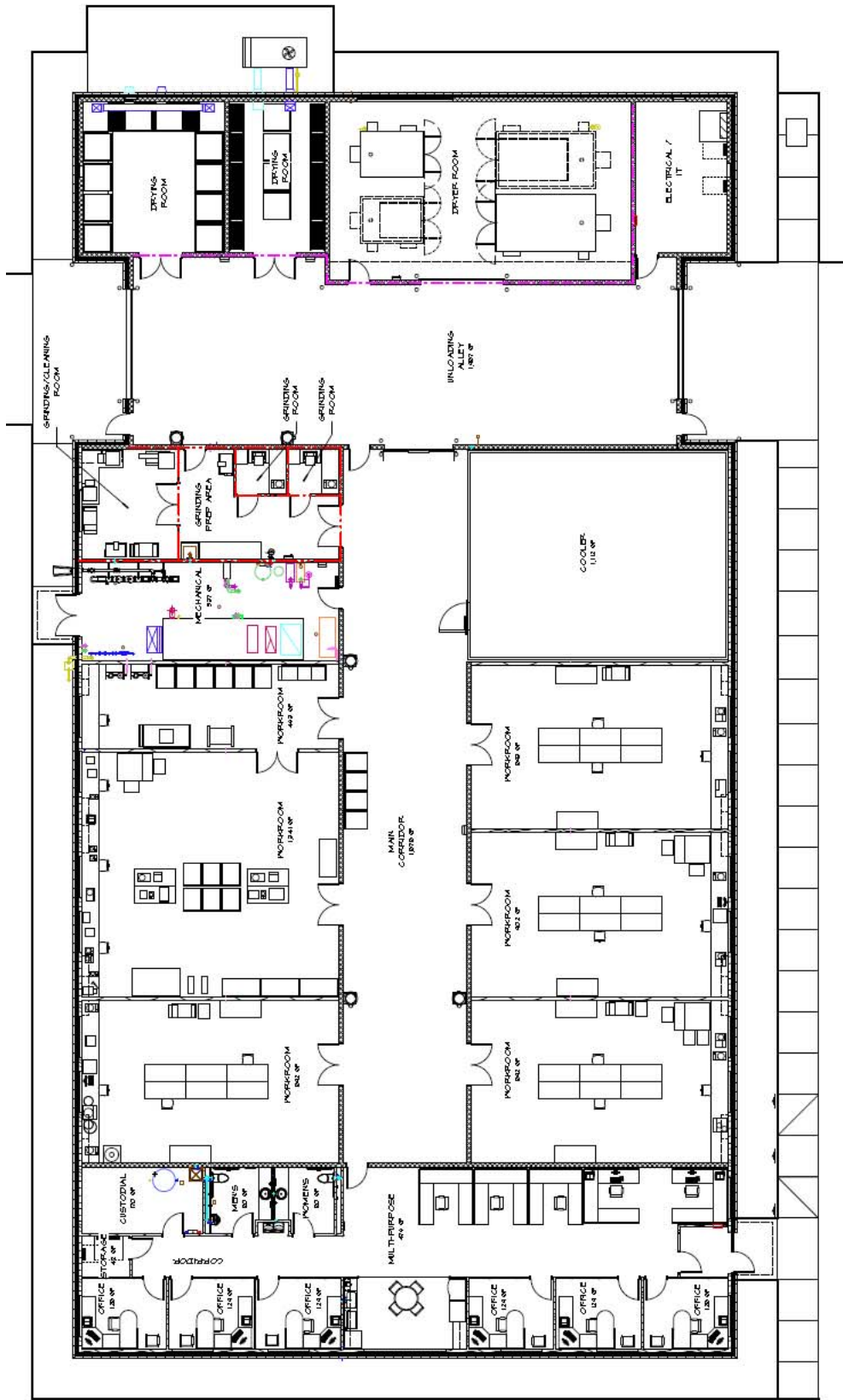
The updated project budget with architect's estimated construction costs is as follows.

Base Bid Construction	\$3,429,496
Laboratory Equipment	\$218,000
Office & Laboratory Furnishings	\$62,000
Connection to North Chiller Plant	\$38,000
Construction Contingency	\$138,700
Total Construction Costs	\$3,886,196
Facility Design Costs	\$2,127,943
<b>TOTAL PROJECT COST ESTIMATE</b>	<b>\$4,499,753</b>

As stated in the Facility Design Plan, the project funding is \$4,500,000.

The floor plan, elevations, and perspective drawings are included on pages two and three.

The project is expected to advertise on April 28<sup>th</sup>, 2016. Anticipated bid date is May 26<sup>th</sup>, 2016.



16,720 SQFT

OVERALL FLOOR PLAN  
1/8" = 1'-0"  
0 5 10 20



EAST ELEVATION  
1/8"

SOUTH ELEVATION  
1/8"

WEST ELEVATION  
1/8"

3D IMAGE

4-08-16