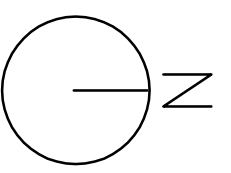


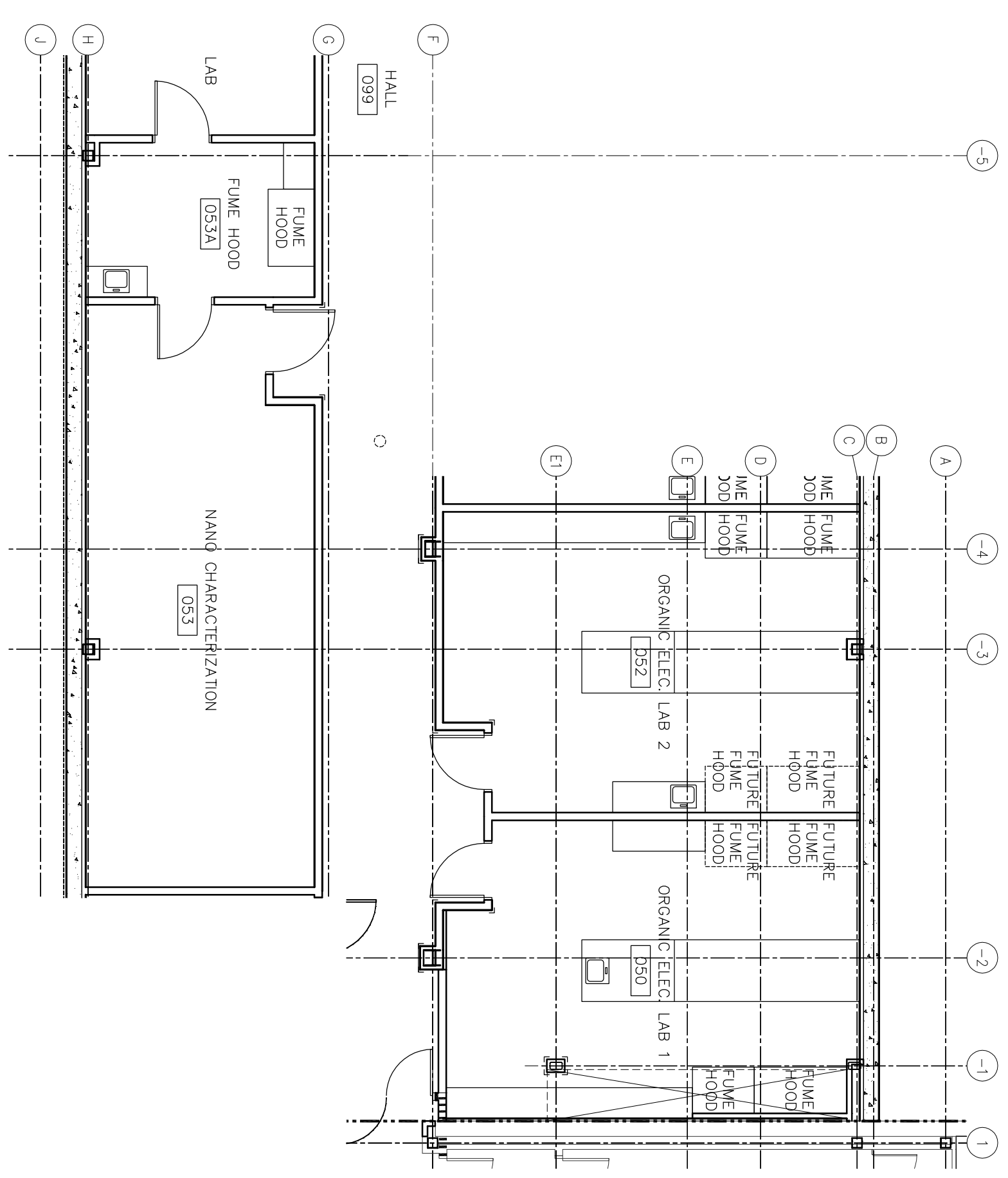
**BASE BID
LOWER LEVEL PLAN**

SCALE 1/8" = 1'-0"



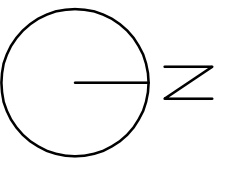
← NEW ADDITION
EXISTING BLDG. →

ADD ALT. ROOM FINISH SCHEDULE						
ROOM NO	ROOM NAME	FLOOR	BASE	WALLS	WALL	CEILING
050	ORGANIC ELEC. LAB 1	VCT	RB	PT	STV/PT	---
052	ORGANIC ELEC. LAB 2	VCT	RB	PT	STV/PT	---
053	CHARACTERIZATION LAB	VCT	RB	PT	STV/PT	---
053A	FLUME HOOD	VCT 1	RB	PT	STV/PT	---



**ADD ALTERNATE #1 & #2
LOWER LEVEL PLAN**

SCALE 1/8" = 1'-0"



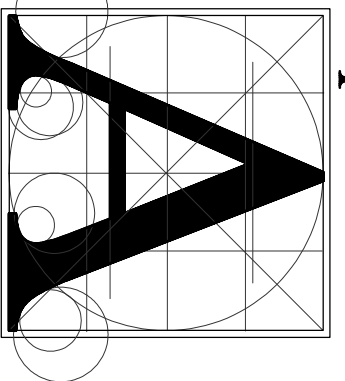
ROOM NO	ROOM NAME	FLOOR	BASE	WALLS	WALL	CEILING	HEIGHT NOTES
050	OPEN SPACE	---	---	---	EXP STR/PT	---	e
051	F&S MAINT.	SCONG	RB	PT	EXP STR/PT	---	---
053	OPEN SPACE	---	---	---	EXP STR/PT	---	e
056	ORGANIC ELEC. LAB 3	VCT	RB	PT	EXP STR/PT	---	---
058	ORGANIC ELEC. LAB 4	VCT	RB	PT	EXP STR/PT	---	---
061	SENSORS RESEARCH LAB	VCT	RB	PT	EXP STR/PT	---	---
064	OPTICS LAB	VCT 3	RB	PT	EXP STR/PT	---	---
064A	STOR.	SCONG	RB	PT	PT	VARIABLES	b
065	BASIC EE INSTRUCTIONAL LAB	VCT	RB	PT	ATC	9'-0"	---
099	HALL	VCT	RB 2	PT	ATC 2/PT	9'-6"	f
099D	STAIR	RST	RST	PT	2/CT	9'-6"	a, d

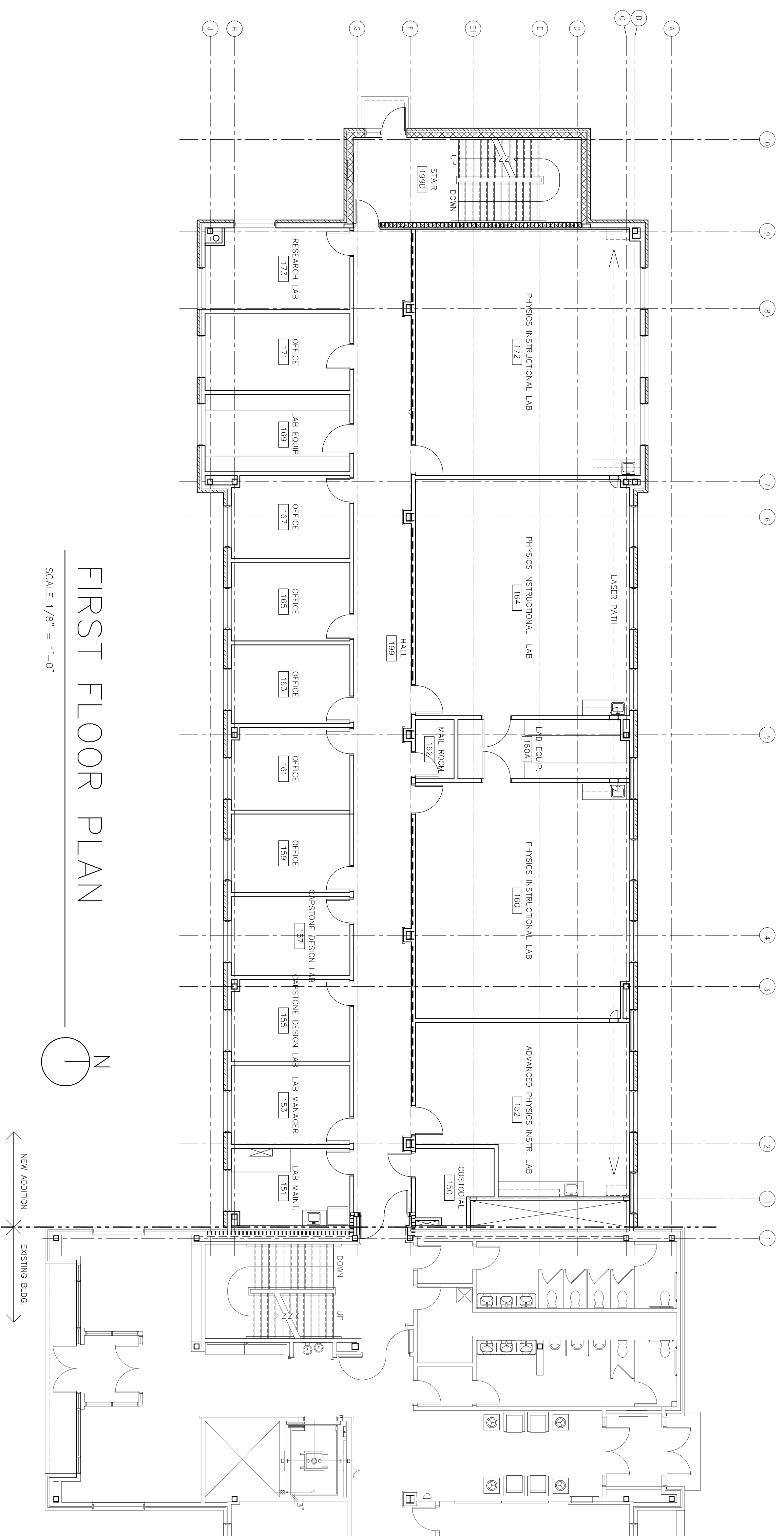
ROOM FINISH NOTES:
a. VCT AT MAIN FLOOR, RUBBER STAIR TREADS, RISERS AND INTERMEDIATE
b. 2-LAYERS 5/8" Gypsum BOARD AT UNDERSIDE OF STAIRS TO MAINTAIN
2-HOUR STAIR SHAFT ENCLOSURE FIRE RATING. GYPSUM BOARD TAPED
AND SANDED, NO PAINT.
c. CEILING HEIGHT VARIES AT STAIRS/INTERMEDIATE LANINGS. SEE STAIR
SECTIONS.
d. SEE BASE BID WORK DESCRIPTION ON THIS SHEET.
e. ROOM 053 - DARK FINISHES AT WALLS/CEILING.
f. ROOM 064 - DARK FINISHES ON FLOOR, CEILING AND WALLS.

**PARTITIONS
4.2**

Architecture Incorporated

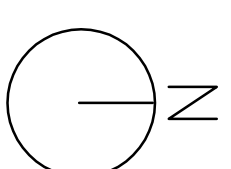
415 South Main Avenue
P.O. Box 2140
Stouffville, South Dakota 57101-2140
phone: (605)339-1711 fax: 339-2331





FIRST FLOOR PLAN

SCALE 1/8" = 1'-0"



NEW ADDITION
EXISTING BLDG.

ROOM NO	ROOM NAME	FLOOR	BASE	WALLS	CEILING		NOTES
					MATL	HEIGHT	
150	CUSTODIAL	SCONG	RB	PT	EXP STR/PT	--	--
151	LAB MAINT.	1&2	RB	PT	ATC 2	9'-0"	--
152	ADVANCED PHYSICS INSTR. LAB	1&2	RB	PT	EXP STR/PT	--	--
153	LAB MANAGER	VCT 1	RB	PT	ATC 2	9'-0"	--
155	CAPSTONE DESIGN LAB	VCT 1	RB	PT	ATC 2	9'-0"	--
157	CAPSTONE DESIGN LAB	VCT 1	RB	PT	ATC 2	9'-0"	--
159	OFFICE	VCT 1	RB	PT	ATC 2	9'-0"	--
160	PHYSICS INSTR. LAB	1&2	RB	PT	STR/PT	--	--
160A	LAB EQUIP.	VCT 1	RB	PT	EXP STR/PT	--	--
161	OFFICE	VCT 1	RB	PT	ATC 2	9'-0"	--
162	MAIL ROOM	VCT 1	RB	PT	EXP STR/PT	--	--
163	OFFICE	VCT 1	RB	PT	ATC 2	9'-0"	--
164	PHYSICS INSTR. LAB	VCT 1&2	RB	PT	STR/PT	--	--
165	OFFICE	VCT 1	RB	PT	ATC 2	9'-0"	--
167	OFFICE	VCT 1	RB	PT	ATC 2	9'-0"	--
169	LAB EQUIP.	VCT 1	RB	PT	ATC 2	9'-0"	--
171	OFFICE	1&2	RB	PT	ATC 2	9'-0"	--
172	PHYSICS INSTR. LAB	1&2	RB	PT	EXP STR/PT	--	--
173	RESEARCH LAB	1&2	RB	PT	ATC 2	9'-0"	--
199	HALL	VCT 1&2	RB	PT	ATC 2	9'-6"	--
1990	STAIR	VCT1 /RST	RST	PT	ATC 2	9'-6"	o, d

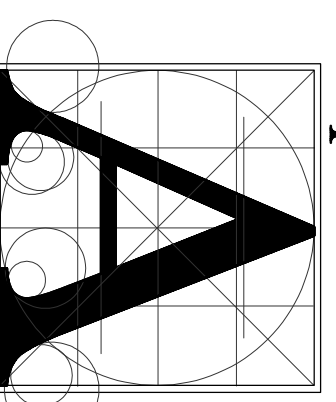
ROOM FINISH SCHEDULE

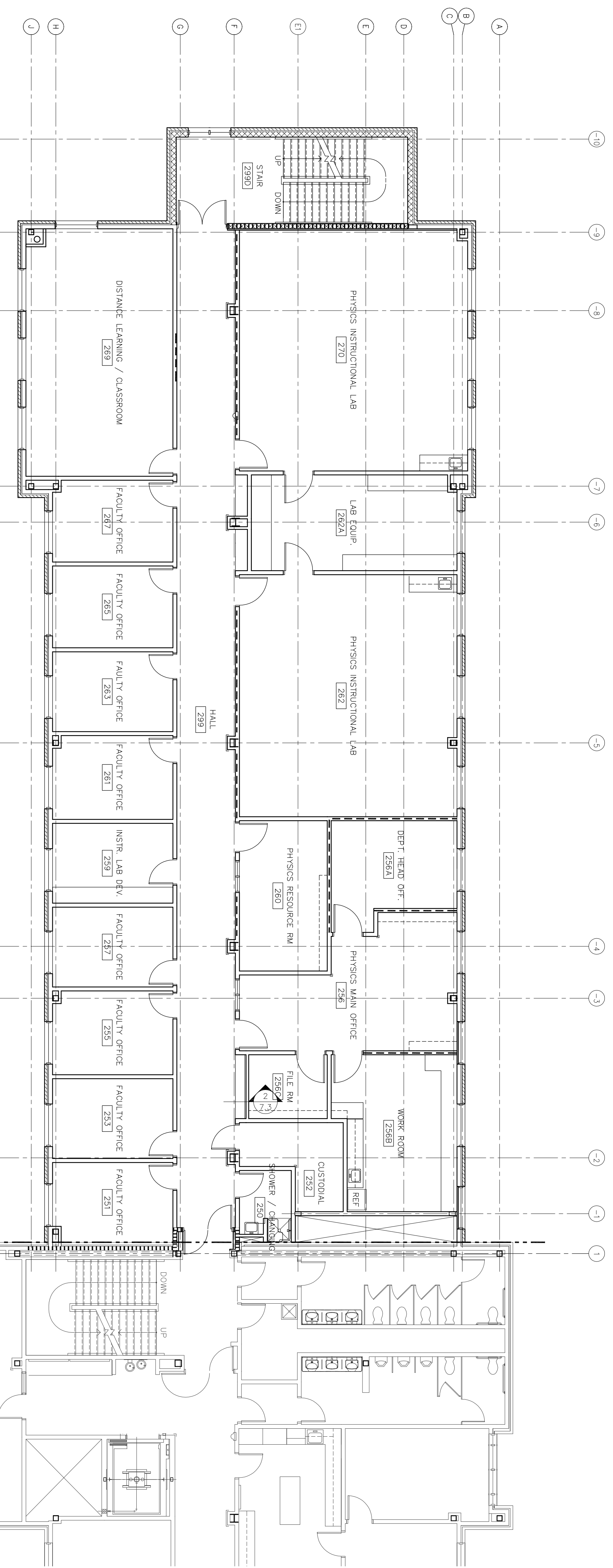
PARTITIONS

4.3

Architecture Incorporated

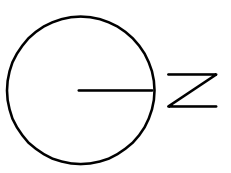
415 South Main Avenue
P.O. Box 2140
Sioux Falls, South Dakota 57101-2140
phone: (605)339-1711 fax: 339-2331





SECOND FLOOR PLAN

SCALE 1/8" = 1'-0"



← NEW ADDITION → EXISTING BLDG.

ROOM NO	ROOM NAME	FLOOR	BASE	WALLS	CEILING	MATERIAL	HEIGHT	NOTES
250	SHOWER / CHANGING	OT 4	CT 4	CT 5	PT		9'-0"	--
251	FACULTY OFFICE	VCT 1	RB	PT	ATC 2		9'-0"	--
252	CUSTODIAL	SCONG	RB	PT	EXP STR/PT		--	--
253	FACULTY OFFICE	VCT 1	RB	PT	ATC 2		9'-0"	--
255	FACULTY OFFICE	VCT 1	RB	PT	ATC 2		9'-0"	--
256	PHYSICS MAIN OFFICE	GPT 1	RB	PT	ATC 1		9'-0"	--
256A	DEPT. HEAD OFF.	GPT 1	RB	PT	ATC 1		9'-0"	--
256B	WORK ROOM	GPT 1	RB	PT	ATC 1		9'-0"	--
256C	FILE RM	GPT 1	RB	PT	ATC 1		9'-0"	--
257	FACULTY OFFICE	VCT 1	RB	PT	ATC 2		9'-0"	--
259	INSTR. LAB DEV.	VCT 1	RB	PT	ATC 2		9'-0"	--
260	PHYSICS RESOURCE RM	VCT 1	RB	PT	ATC 2		9'-0"	--
261	FACULTY OFFICE	VCT 1	RB	PT	ATC 2		9'-0"	--
262	PHYSICS INSTRUCTIONAL LAB	VCT 1	RB	PT	EXP STR/PT		--	--
262A	LAB EQUIP.	VCT 1	RB	PT	EXP STR/PT		--	--
263	FACULTY OFFICE	VCT 1	RB	PT	ATC 2		9'-0"	--
266	FACULTY OFFICE	VCT 1	RB	PT	ATC 2		9'-0"	--
267	FACULTY OFFICE	VCT 1	RB	PT	ATC 2		9'-0"	--
269	DISTANCE LEARNING / CLASSROOM	GPT 1	RB	PT	ATC 1		9'-0"	--
270	PHYSICS INSTRUCTIONAL LAB	VCT 1	RB	PT	EXP STR/PT		--	--
299	HALL	VCT 1	RB	PT	ATC 2		9'-6"	--
299D	STAIR	VCT 1/RSST	RST	PT	ATC 2		9'-6"	o, d

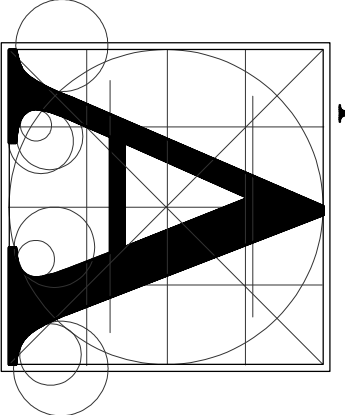
ROOM FINISH NOTES:
 a. VCT AT MAIN FLOOR, RUBBER STAIR TREADS, RISERS AND INTERMEDIATE
 b. 2 LAYERS 5/8" Gypsum BOARD AT UNDERSIDE OF STAIRS TO MAINTAIN
 c. AND SANDED, NO PAINT.
 d. CEILING HEIGHT VARIES AT STAIRS/INTERMEDIATE LANINGS. SEE STAIR
 e. TILE AT COLUMNS.
 f. SEE BASE BID WORK DESCRIPTION ON THIS SHEET.

PARTITIONS

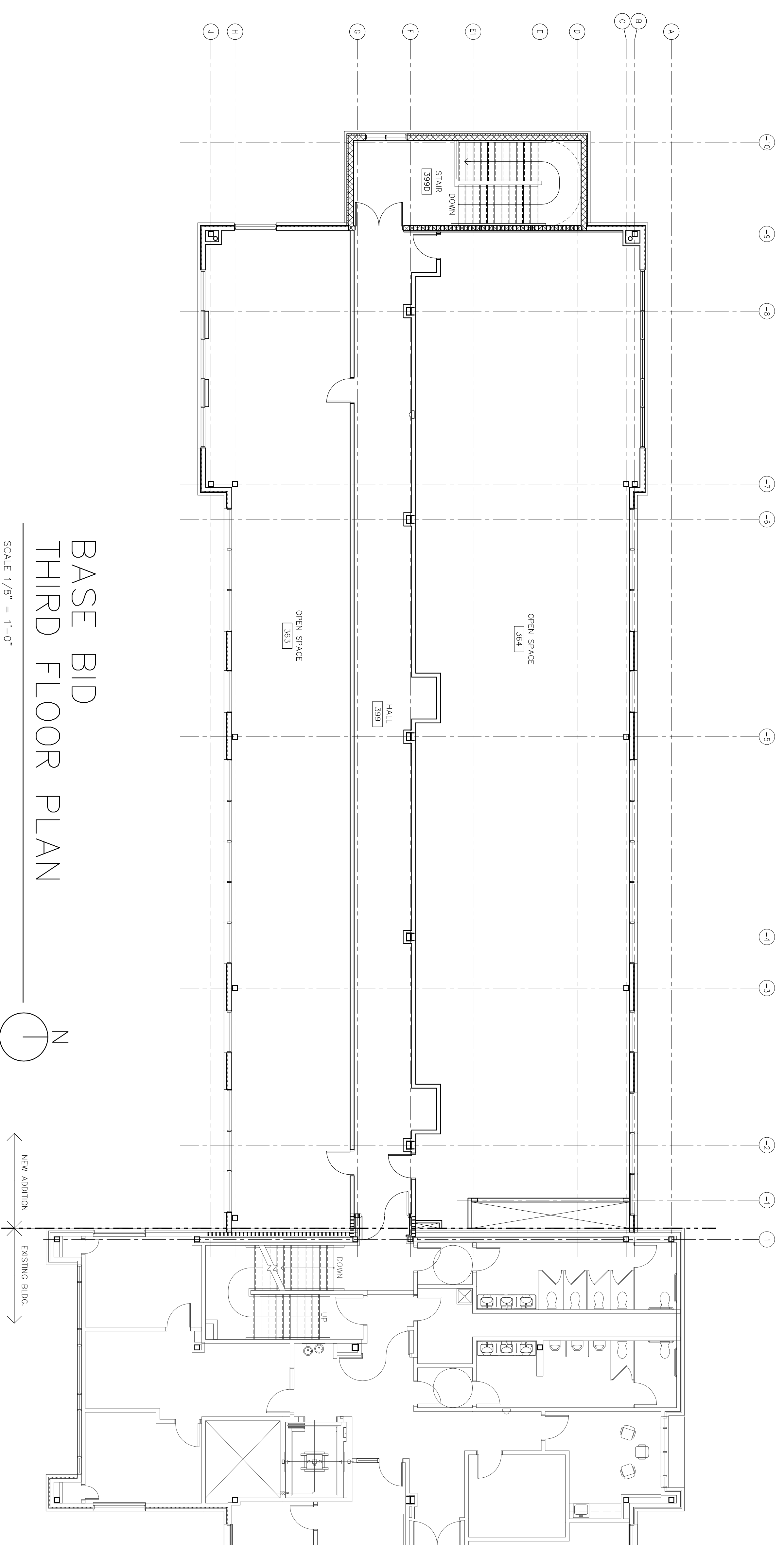
4.4

Architecture Incorporated

415 South Main Avenue
 P.O. Box 2140
 Sioux Falls, South Dakota 57101-2140
 Phone: (605)339-1711 fax: 339-2331



BASE BID ROOM FINISH SCHEDULE									
ROOM NO.	ROOM NAME	FLOOR	BASE	WALLS	CEILING	MATL.	HEIGHT	NOTES	
363	OPEN SPACE	--	--	--	--	--	--	f	
364	OPEN SPACE	--	--	--	--	--	--	f	
399	HALL	VCT	RB2	PT	ATC	1/2	9'-6"	--	
399D	STAIR	VCT	RST	PT	ATC 2	9'-6"	--	a, c	
		1/RRST			/OVP/PT				

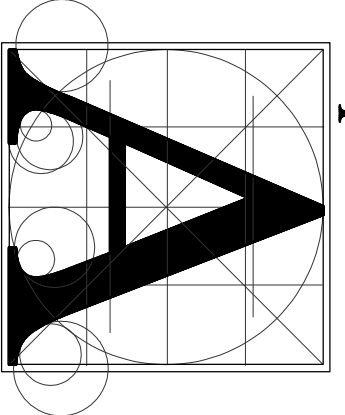


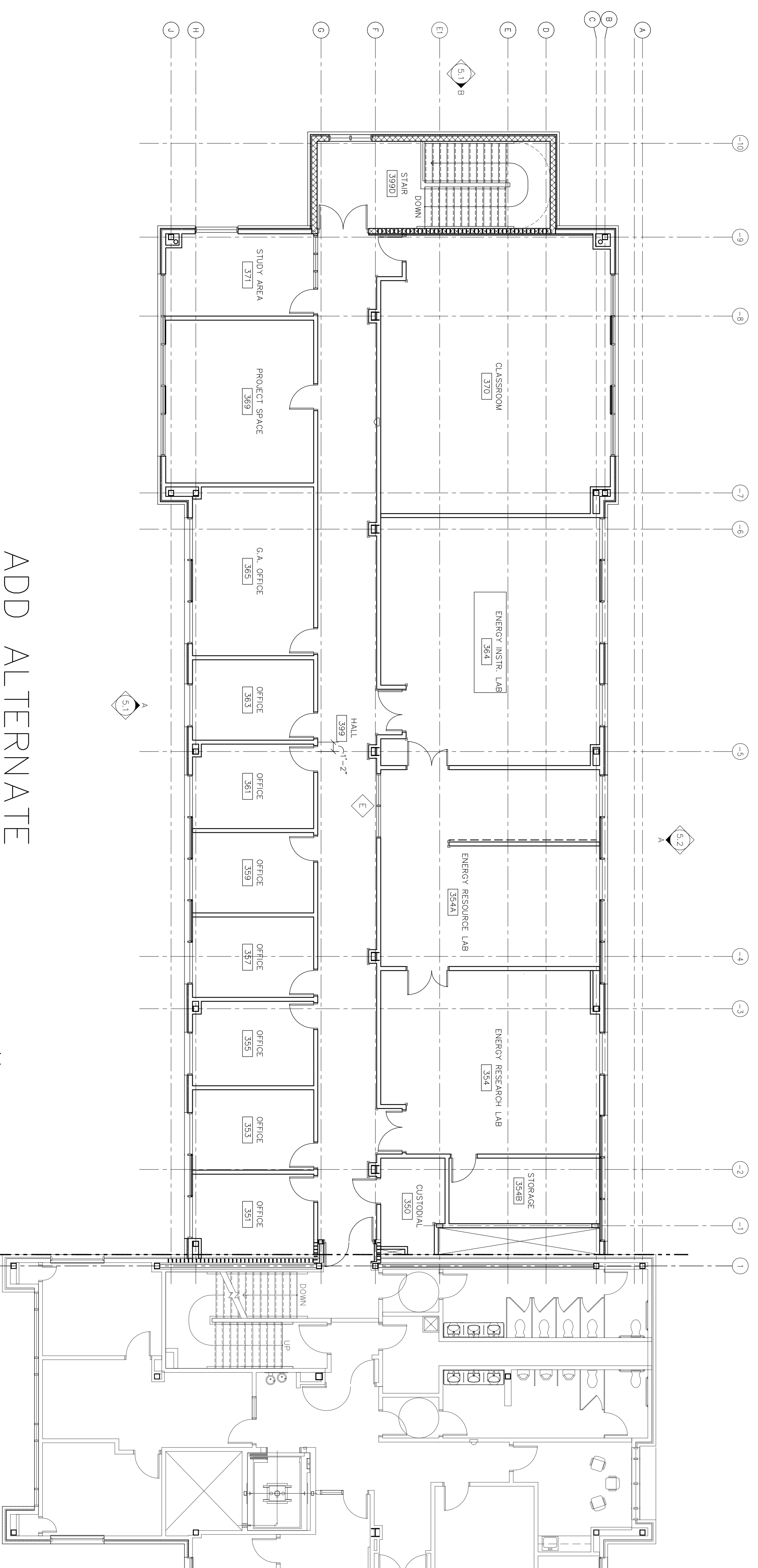
BASE BID
THIRD FLOOR PLAN
SCALE 1/8" = 1'-0"

PARTITIONS
4.5

Architecture Incorporated

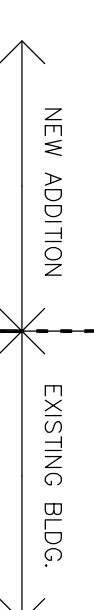
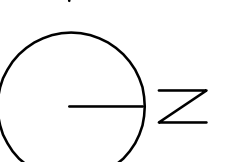
415 South Main Avenue
P.O. Box 2140
Sioux Falls, South Dakota 57101-2140
phone: (605)339-1711 fax: 339-2331





ADD ALTERNATE
THIRD FLOOR PLAN

SCALE 1/8" = 1'-0"



ROOM NO.	ROOM NAME	FLOOR	BASE	WALLS	CEILING		NOTES
					MATL.	HEIGHT	
350	CUSTODIAL	SCONG	RB	PT	EXP	---	---
351	OFFICE	VCT 1	RB	PT	ATC 2	9'-0"	---
353	OFFICE	VCT 1	RB	PT	ATC 2	9'-0"	---
354	ENERGY RESEARCH LAB	VCT 1&2	RB	PT	ATC 1	9'-0"	---
354A	ENERGY RESOURCE LAB	VCT 1&2	RB	PT	ATC 1	9'-0"	---
354B	STORAGE	SCONG	RB	PT	ATC 1	9'-0"	---
355	OFFICE	VCT 1	RB	PT	ATC 2	9'-0"	---
357	OFFICE	VCT 1	RB	PT	ATC 2	9'-0"	---
359	OFFICE	VCT 1	RB	PT	ATC 2	9'-0"	---
361	OFFICE	VCT 1	RB	PT	ATC 2	9'-0"	---
363	OFFICE	VCT 1	RB	PT	ATC 2	9'-0"	---
364	ENERGY INSTR. LAB	VCT 1&2	RB	PT	ATC 1	9'-0"	---
365	G.A. OFFICE	VCT 1	RB	PT	ATC 2	9'-0"	---
369	PROJECT SPACE	VCT 1	RB	PT	ATC 2	9'-0"	---
370	CLASSROOM	VCT 1&2	RB	PT	ATC 1	9'-0"	---
371	STUDY AREA	OPT 1	RB	PT	ATC 1	9'-0"	---
399	HALL	VCT 1&2	RB2	PT	2/PT	9'-6"	---
399D	STAIR	VCT 1/1/RS1	RST	PT	ATC 2	9'-6"	o, c

PARTITIONS
4.5A

Architecture Incorporated

415 South Main Avenue
P.O. Box 2140
Sioux Falls, South Dakota 57101-2140
phone: (605)339-1711 fax: 339-2331

