

SOUTH DAKOTA BOARD OF REGENTS

Academic and Student Affairs

AGENDA ITEM: 6 – J
DATE: October 3-5, 2017

SUBJECT

High School Dual Credit Enrollment and Grade Report

PERTINENT HISTORY

At the conclusion of each term, the Board of Regents receives an update on the most recent grade activity for students enrolled in the High School Dual Credit (HSDC) program, and current enrollment numbers. Most recently, the Board reviewed the data from the Fall 2016 term during the [March 2016](#) meeting.

CONTROLLING STATUTE, RULE, OR POLICY

[BOR Policy 2:5 – Transfer of Credit](#)
[Academic Affairs Guideline 7.1 – Dual and Concurrent Credit Administration Guidelines](#)

BACKGROUND / DISCUSSION

The high school dual credit program is now entering its fourth year. The Board is periodically updated on enrollment data and student performance, which is included in the attached report.

IMPACT AND RECOMMENDATIONS

Enrollments in the HSDC program continue to increase each term as student and district interest remains high. Eligibility requirements established for the program when it first began in Fall 2014 have had a positive impact on the performance of students in the program with data from each term indicating a 93% success rate (earning a C or higher in the course).

ATTACHMENTS

Attachment I – Special Data Analysis: High School Dual Credit Enrollment & Grade Report

INFORMATIONAL ITEM

This item is for informational purposes only. Any action will be at the Board’s discretion.

*** Special Data Analysis ***



High School Dual Credit Enrollment and Grade Report

The High School Dual Credit Program is now entering its fourth year. Enrollment data for Summer 2017 & Fall 2017, as well as grade performance data for Spring 2017 & Summer 2017 are included in this report.

Summer 2017 & Fall 2017 Enrollment

The enrollment process for Summer 2017 opened in February, and students were able to register until the first day of classes for the summer session in which they enrolled. The numbers below were taken after the extract was frozen in late July. 325 individual students have enrolled in 429 courses (see Figures 1 & 2). Those students are taking 1,287 credits through BOR institutions. Since the previous Summer semester in 2016, our headcount has had a modest increase, increasing by forty-two students (14.8% increase), and our course enrollments have gone up by fifty-eight (15.6% increase).

For Fall 2017, the enrollment period stretched from April, until the end of the first day of classes. Enrollments are up yet again, to 3,446, which is an increase of 33.8% from Fall 2016 and 14.4% from Spring 2017. Headcounts are up to 2,408, an increase of 38.2% from Fall 2016 and 23.8% from Spring 2017. Those students are taking 10,053 credits from BOR institutions.

Figure 1
HSDC Course Enrollment by Semester Type

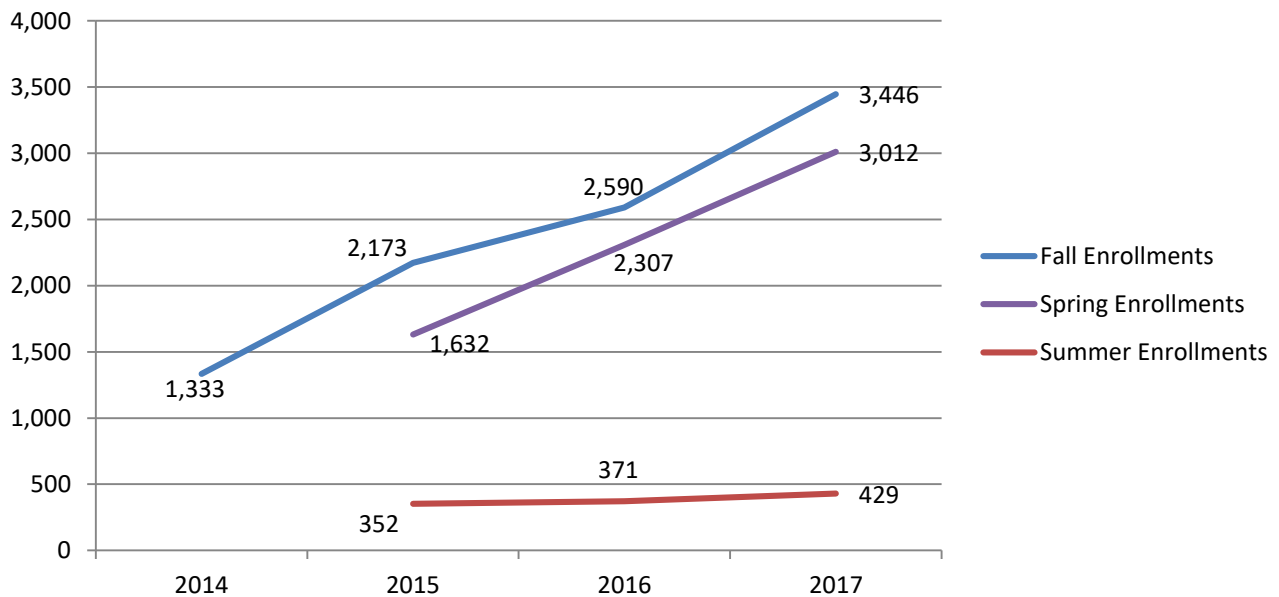


Figure 2
HSDC Headcount by Semester Type

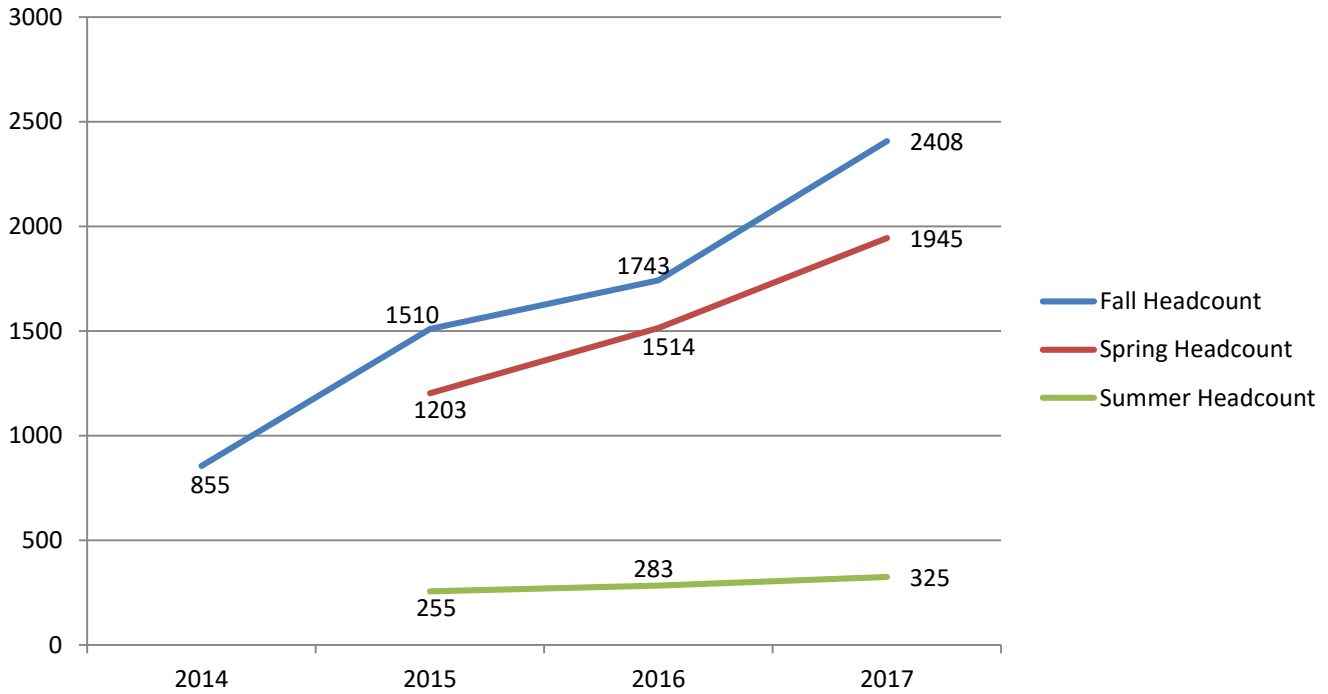


Table 1 depicts the top ten courses by enrollment in the program for Fall 2017, and also breaks down enrollments by online and face-to-face enrollments for each campus.

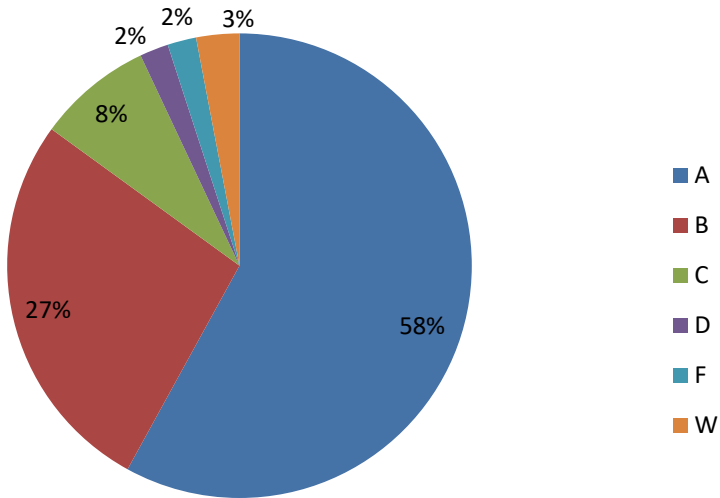
Table 1
Frequency of Online (OL) vs Face-to-Face (F2F) Enrollments by Course – Summer 2017

| | BHSU | | DSU | | NSU | | SDSMT | | SDSU | | USD | | Total |
|----------------------------|------|-----|-----|-----|-----|-----|-------|-----|------|-----|-----|-----|-------|
| | OL | F2F | OL | F2F | OL | F2F | OL | F2F | OL | F2F | OL | F2F | |
| 1. Fundamentals of Speech | 15 | 11 | 51 | | 77 | 2 | | | 106 | | 203 | 4 | 469 |
| 2. College Algebra | 92 | 22 | 19 | 39 | 95 | 12 | | | 87 | 3 | 97 | | 466 |
| 3. Composition I | 66 | 16 | 15 | | 65 | 5 | 5 | | 63 | 2 | 177 | 7 | 421 |
| 4. General Psychology | 75 | 7 | | | 50 | 3 | 1 | | 115 | 6 | 115 | 3 | 375 |
| 5. U.S. History I | 69 | 6 | | | 92 | | 1 | | 29 | | 64 | 3 | 264 |
| 6. American Government | 59 | 8 | 5 | | 84 | 1 | | | 19 | 1 | 44 | 2 | 222 |
| 7. Intro to Sociology | 15 | 2 | 1 | | 48 | 4 | | | 28 | 1 | 39 | | 138 |
| 8. Music Appreciation | 10 | | | | 30 | | | | 5 | 2 | 55 | | 102 |
| 9. Survey of Biology I/Lab | 4 | 2 | 26 | | 8 | | | | 9 | 4 | 19 | | 72 |
| 10. Art Appreciation | 4 | | | | 12 | | | | 23 | | 14 | | 53 |

Spring 2017 Grades

The BOR office received performance data from the Spring 2017 semester for students participating in the High School Dual Credit Program (see Figure 3). Data showed that 93% of HSDC students in the Regental System finished with a grade of C or higher, which is a 3% increase from the Spring 2016 semester a year ago. 4% of students finished with grades of D or F, which was 2% less than Spring 2016, and 3% of students withdrew from courses, which was the same as Spring 2016.

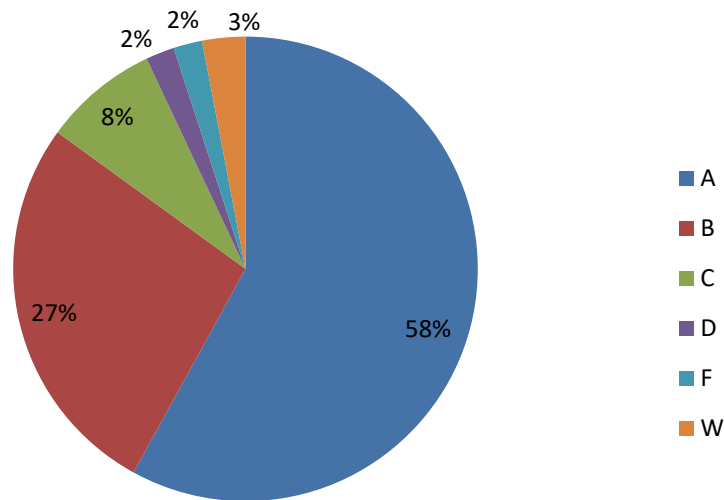
Figure 3
Percentage of Grades Received in BOR HSDC Courses – Spring 2017



Summer 2017 Grades

For the Summer 2017 semester, as shown in Figure 4, data showed that 88% of HSDC students in the Regental System finished with a grade of C or higher, which is a 2% decrease from the Summer 2016 semester a year ago. 6% of students finished with grades of D or F, which was 3% less than Summer 2016, and 6% of students withdrew from courses, which was a 5% increase from Summer 2016. Since the program began, we have seen a slight decline in performance for the Summer semester when compared to Fall and Spring semesters. This is largely due to the shorter, more intensive courses during the summer, as well as other commitments such as summer activities and jobs that students may also have.

Figure 4
Percentage of Grades Received in BOR HSDC Courses – Summer 2017



We have seen these grade rates remain stable since the beginning of the program. As described above, there typically is a dip in performance for Summer semester courses. Figure 5 shows the percentage of students receiving certain grades over the course of the HSDC program. Figure 6 compiles that data into ABC Rates & DFW Rates. These combine students received either A, B, or C grades (successful course completions), or D, F or W grades (unsuccessful course completions)

Figure 5
Percentage of Grades Received in BOR HSDC Courses Over Time

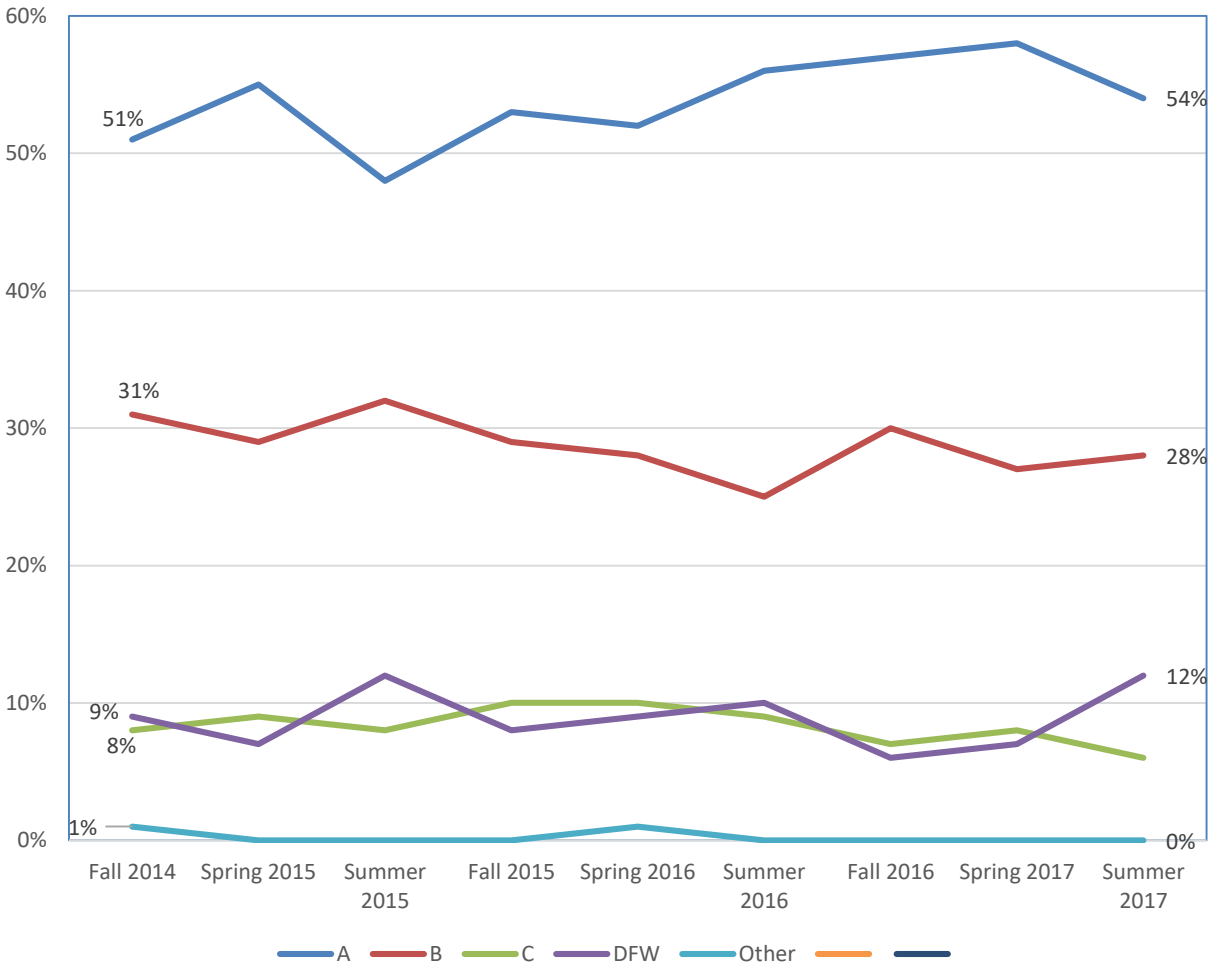


Figure 6
ABC & DFW Rates in BOR HSDC Program Over Time

