

SOUTH DAKOTA BOARD OF REGENTS

Planning and Resource Development

AGENDA ITEM: 5 – F

DATE: March 28-30, 2017

SUBJECT: BHSU Foundation Report

Mr. Steve Meeker, BHSU Vice President of University Advancement, will provide an overview of the efforts undertaken by the BHSU Foundation to support the university. Attachments include the following:

1. BHSU Foundation Profile (Attachment I)
2. BHSU Foundation Organizational Chart (Attachment II)
3. BHSU Foundation Endowment Profile (Attachment III)

INFORMATIONAL ITEM

Black Hills State University Foundation Organizational Profile

Financial Profile, as of 12/31/2016

Total BHSU Foundation net assets	\$18.5 million
Total BHSU Foundation investment assets	\$15.9 million

BHSU Board of Directors

20 member board that meets biannually.
President – Harvey Krautschun
Vice President – Daryl Johnson

BHSU Alumni Association

The BHSU Foundation oversees and manages the BHSU Alumni Association events, budget, and activities.

Building on Strength and Stature Capital Campaign - 2008-2014

A six-year comprehensive campaign commenced in 2008 and had an initial goal for \$22 million. The campaign was completed on July 1, 2014 and raised a total of \$26 million surpassing its goal.

Because of You Capital Campaign - 2014-Present

The Because of You capital campaign is currently in progress and had an initial goal of \$23 million. This campaign has raised \$21 million to date.

Campaign Goals:

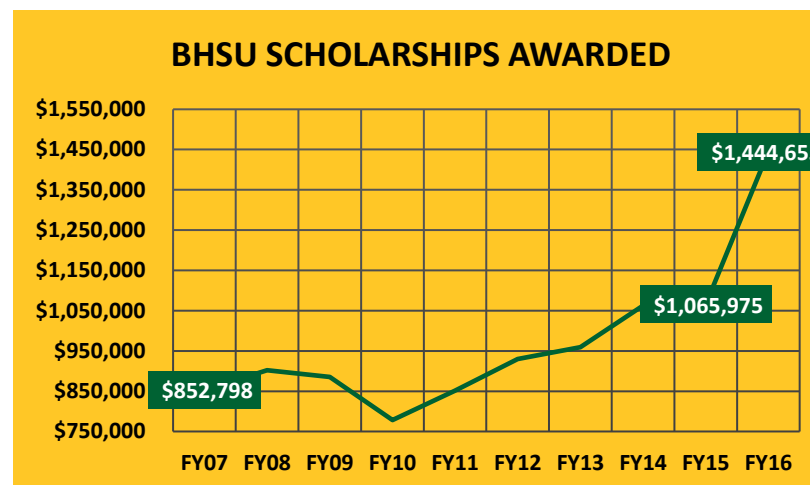
Endowment Student Scholarships
Athletic Facility Upgrades
Wellness Center
Library

Current Year Foundation Support to the University

\$1.4 million paid in scholarships.
\$41,921 paid in operational endowment support.
\$40,725 provided for presidential support.
\$47,096 provided for alumni services.

Points of Pride

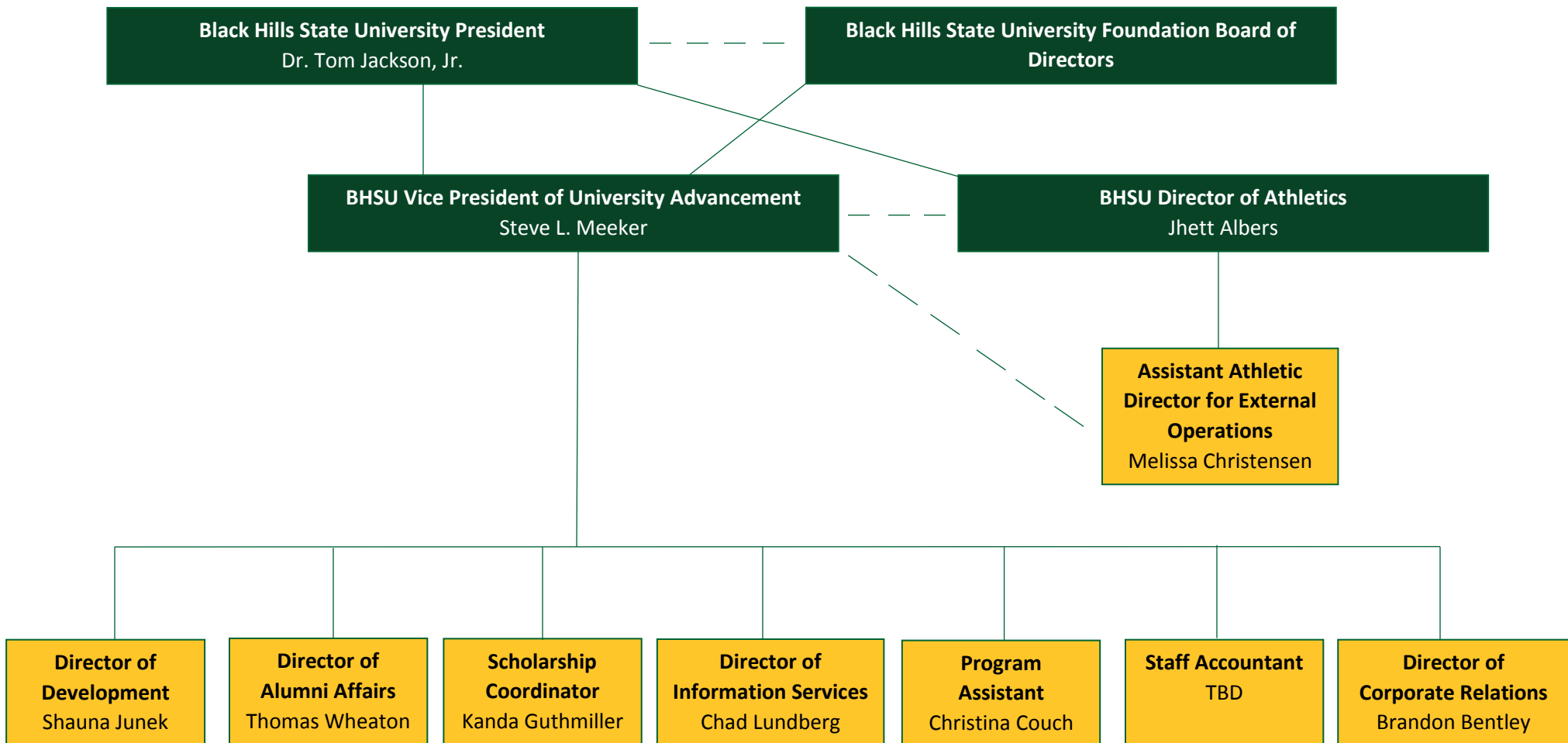
Nearly \$50 million raised during the past 10 years.
BHSU had a 35.5% increase in scholarships awarded between FY15 and FY16.



Capital Projects

- New football field scoreboard installed in 2013.
- Joy (Proctor) Krautschun Alumni/Foundation Welcome Center opened in 2014.
- New President's Residence construction was completed in 2015.
- Sanford Science Education Center opened in 2016.

BHSU Foundation Organizational Chart



Black Hills State University Foundation Endowment Profile

Endowment Profile, as of 12/31/2016

Total BHSU Foundation Endowments \$14.4 million
 45% increase in endowment balances in the past 10 years.

Endowment Payout Rate – 5%

Distribution rate for the 2016-2017 academic year is based on a 12 quarter rolling average of the endowment’s market value.

Minimum Required to Create an Endowment

\$10,000

Annual Endowment Administrative Fee

An annual fee of 2% is assessed on the 12 quarter rolling average of the individual endowment’s market values.

BHSU Foundation Investment Allocation

