

SOUTH DAKOTA BOARD OF REGENTS

Academic and Student Affairs

AGENDA ITEM: 6 – T

DATE: March 30 – April 1, 2016

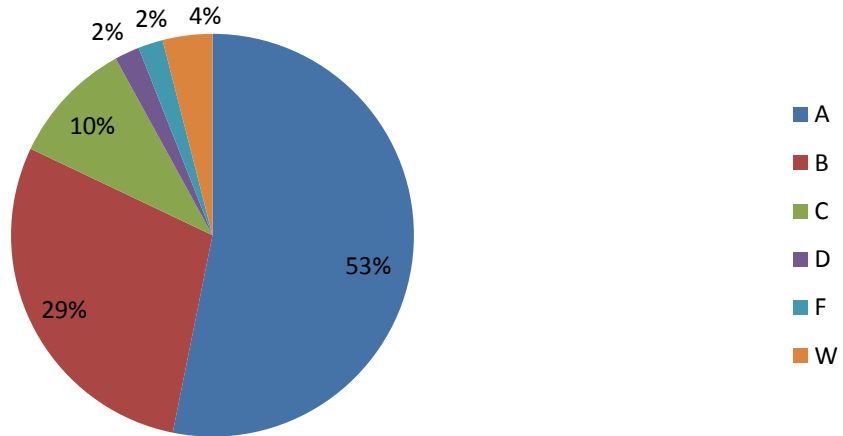
SUBJECT: HSDC Program Grade & Enrollment Report

Fall 2015 Grades

The BOR office received performance data from the Fall 2015 semester for students participating in the High School Dual Credit Program (See Figure 1). Data showed that 92% of HSDC students in the Regental System finished with a grade of C or higher, which is a 1% decrease from the Fall 2014 semester. 4% of students finished with grades of D or F, which was equal to Fall 2014, and 4% of students withdrew from courses, which was a 1% increase. We have seen these rates remain stable since the beginning of the program (see Table 1).

*Figure 1
Percentage of Grades Received in BOR HSDC Courses – Fall 2015*

Fall 2015 HSDC Grades



(Continued)

RECOMMENDED ACTION OF THE EXECUTIVE DIRECTOR

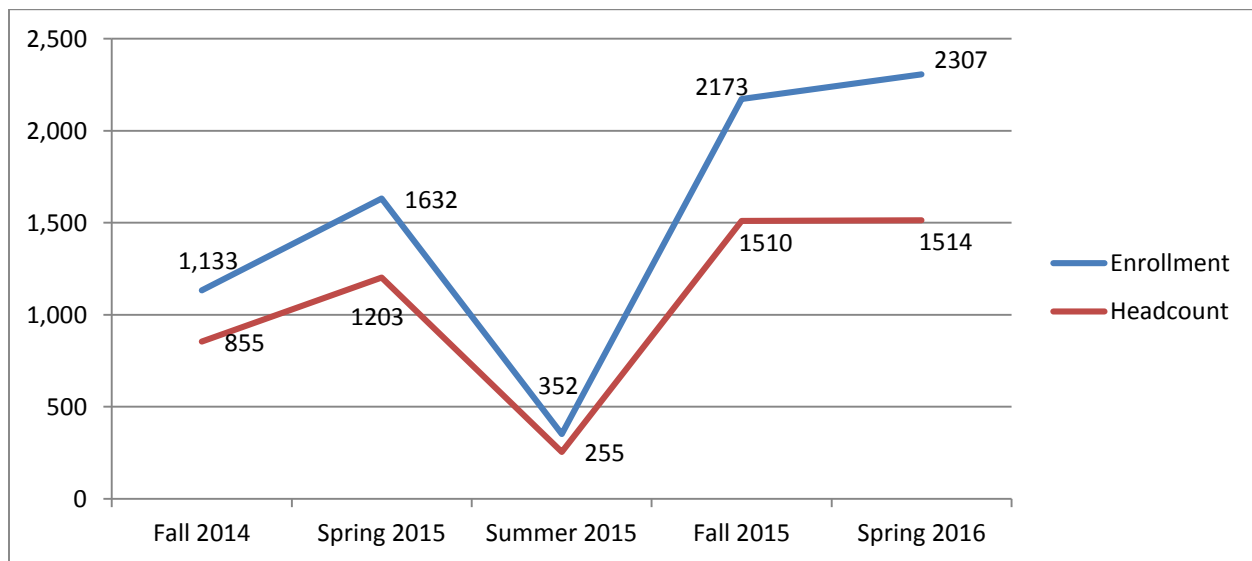
Information only.

Grade	Fall 2014	Spring 2015	Summer 2015	Fall 2015	Difference from Spring 2015
A	51%	55%	48%	53%	-2%
B	31%	29%	32%	29%	0%
C	8%	9%	8%	10%	+1%
D	3%	2%	3%	2%	0%
F	2%		5%	2%	0%
W	4%	3%	4%	4%	+1%
Other	1%	0%	0%	0%	0%
ABC Rate	90%	93%	88%	92%	-1%
DFW Rate	9%	7%	12%	8%	+1%

Spring 2016 Enrollment

The enrollment process for Spring 2016 opened in early November, and students were able to register until the first day of classes. The numbers below were taken after the census date, so students who dropped courses are not included in these numbers. 1,504 individual students have enrolled in 2,307 courses (see Figure 2). Those students are taking 6,839 credits through BOR institutions. Since the previous Spring semester in 2015, our headcount has gone up by 25.8%, and our course enrollments have gone up 41.3%. Table 2 depicts the top twenty courses by enrollment in the program for Spring 2016, and also breaks down enrollments by online and face-to-face enrollments for each campus.

Figure 2
HSDC Enrollment & Headcount By Semester



HSDC Grade & Enrollment Report

March 30 – April 1, 2016

Page 3 of 3

Table 2
Frequency of Online (OL) vs. Face-to-Face (F2F) Enrollments by Course – Spring 2016

	BHSU		DSU		NSU		SDSMT		SDSU		USD		Total
	OL	F2F	OL	F2F	OL	F2F	OL	F2F	OL	F2F	OL	F2F	
1. Fundamentals of Speech	14	4	20		66	4			107	16	132		363
2. College Algebra	37	12	31	5	63	10	1		47	3	88		297
3. General Psychology	35	8				6	8		80		119	4	260
4. Introduction to Sociology	22	1			26	14	2		50	14	67		196
5. Composition I	8	2	11		30	5	8		34	1	55	8	162
6. Introduction to Literature	7				18		8		15	1	52	8	109
7. American Government	10		3	1	11				10		65		100
8. United States History II	8	2			38		1		2	4	27		82
9. Music Appreciation	7				14	3			8		46		78
10. Composition II	10	2			7				23	3	3	2	50
11. United States History I	36	2							9		1		48
12. Film Appreciation											33		33
13. Art Appreciation	3	3			2				9	1	7		25
14. Social Problems	3	1	2						10	2	6		24
15. Introduction to Computers			18										18
16. Introduction to Mass Communication	6									1	10		17
17. Introductory Spanish II	3				12								15
18. Computer Science I			12	2									14
19. Principles of Microeconomics	7	1			6								14
20. Lifespan Development									14				14