

ACADEMIC AFFAIRS COUNCIL

AGENDA ITEM: 5.B

DATE: June 10, 2015

\*\*\*\*\*

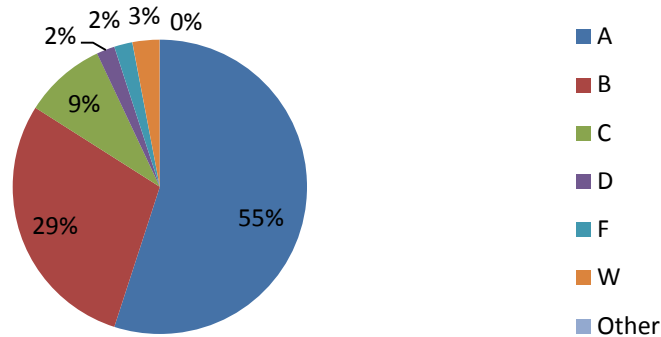
**SUBJECT: Dual Credit – Reduced Tuition Program Update**

The reduced tuition High School Dual Credit Program, which was funded through the state legislature during the 2014 legislative session, has now had students complete the first two semesters of the program.

The BOR office received performance data from the Spring 2015 semester (see Figure 1). Data showed that 93% of HSDC students in the Regental System finished with a grade of C or higher, which is a 3% increase from the Fall 2014 semester. 4% of students finished with grades of D or F and 3% of students withdrew from courses, which both account for 1% decreases from Fall 2014 (see Table 1). As the program moves forward, we hope that success rates will improve as students and school personnel learn what is expected from the program and from college-level courses.

*Figure 1  
Percentage of Grades Received in BOR HSDC Courses – Spring 2015*

**Spring 2015 HSDC Grades**



(Continued)

\*\*\*\*\*

**RECOMMENDED ACTION**

Information only.

**Table 1**  
**Grade Report Comparison for Fall 2014 & Fall 2015**

Grade	Fall 2014	Spring 2015	Difference
<b>A</b>	51%	55%	+4%
<b>B</b>	31%	29%	-2%
<b>C</b>	8%	9%	+1%
<b>D</b>	3%	2%	0%
<b>F</b>	2%	2%	-1%
<b>W</b>	4%	3%	-1%
<b>Other</b>	1%	0%*	-1%

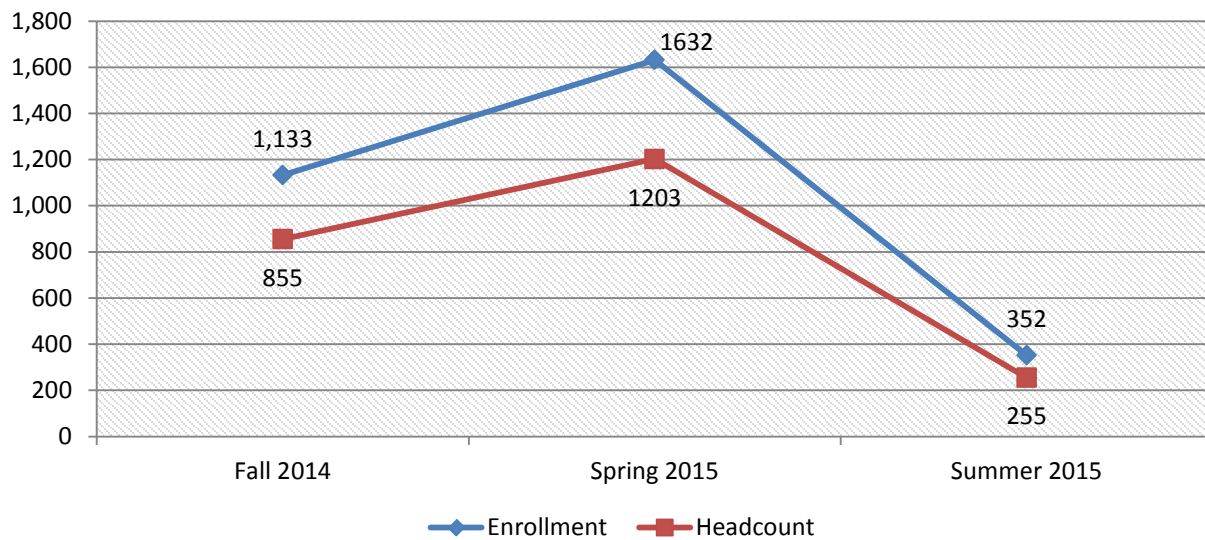
\*There was one grade that qualified as “Other” in Spring 2015, compared to 9 grades in Fall 2014.

**Summer & Fall 2015 Semesters**

The enrollment period for the Summer 2015 semester began on February 23, 2015. The deadline for students to register was May 11, 2015, which was the first day of the summer semester. This was in keeping with past semesters, but due to the unique nature of the summer semester, the deadline caused a few issues with some students wanting to register for courses that started later in the summer after the deadline had past. For the Summer 2016 semester, the Dual Credit Working Group may look to alter the summer deadline to better accommodate students.

The student headcount for Summer 2015 was just over one-fifth of the Spring 2015 headcount (see Figure 2). This decrease in enrollment was anticipated since students are often busy with summer jobs and activities and/or simply want the summer off from school. However, there was still good participation with 255 students enrolled in 352 courses (see Table 2).

**Figure 2**  
**HSDC Enrollment & Headcount By Semester**



*Table 2*  
*HSDC Enrollment & Headcount by Campus – Spring 2015*

<b>Institution</b>	<b>Enrollment</b>	<b>Headcount</b>
<i>BHSU</i>	83	56
<i>DSU</i>	27	24
<i>NSU</i>	47	33
<i>SDSM&amp;T</i>	1	1
<i>SDSU</i>	107	75
<i>USD</i>	87	66
<b>Total</b>	<b>352</b>	<b>255</b>

Table 3 depicts the top 15 courses with the highest Summer 2015 enrollments in the program.

*Table 3*  
*Frequency of Enrollments by Course – Summer 2015*

<b>Course</b>	<b>BHSU</b>	<b>DSU</b>	<b>NSU</b>	<b>SDSMT</b>	<b>SDSU</b>	<b>USD</b>	<b>Total</b>
1. Composition I	15	1	4	0	12	19	51
2. American Government	9	1	7	0	16	15	48
3. College Algebra	12	11	5	0	10	7	45
4. Introduction to Psychology	7	0	0	0	20	15	42
5. Fundamentals of Speech	3	0	9	0	13	5	30
6. Introduction to Sociology	0	2	5	0	3	7	17
7. Music Appreciation	2	0	4	0	1	8	15
8. Introduction to Literature	8	1	0	0	0	1	10
9. Principles of Microeconomics	6	0	0	0	1	2	9
10. Art Appreciation	3	1	3	0	0	1	8
11. Biology Survey I/Lab	2	0	1	0	3	0	6
12. Introduction to Computers	0	5	0	0	0	0	5
13. United States History I	2	0	1	0	2	0	5
14. Lifespan Development	0	0	0	0	4	0	4
15. Drawing I	1	0	0	0	2	0	3

The enrollment process for the Fall Semester opened on April 23, and students will be able to register until the first day of classes on August 24. While we have not received enrollment reports for Fall courses up until this point, we have been hearing from the campuses that interest for Fall courses has been strong. We anticipate the participation in the program will be comparable to past fall and spring semesters, and may continue to increase.

### ***Other Dual Credit Issues***

#### ***Funding***

Going forward, SDDOE was awarded \$700K in additional funds by the legislature to pay for the current year's students since participation was far beyond what was initially expected. The state budget also included increases to the program for the next fiscal year, which would go into effect beginning in Fall 2015. The increases bring the base funds for the program to \$1 million.

#### ***Future Eligibility for HSDC Students with Failing Grades***

While the vast majority of students are successful in dual credit courses, some students do end up with failing grades. According to South Dakota statute, high school students who fail a dual credit course are not allowed to enroll in future post-secondary courses while in high school, absent a showing of good cause.

The issue we are starting to find, now that the program has been in existence for multiple semesters, is determining when and if students who have failed a previous dual credit course have shown enough "good cause" to potentially enroll again. We will be coordinating with DOE to determine their understanding of these statutes, and will reevaluate at that point.