

**South Dakota Board of Regents
2007-08 Major Enrollment Report**

Executive Summary

The *2007-08 Major Enrollment Report* provides enrollment data for majors leading to a degree at one of the six Regental Institutions. The purpose of the report is to provide an overview of the most predominant associate, baccalaureate, and graduate/professional level majors across the system. The report is divided into five sections, and major findings for each are discussed below.

Students Enrolled in More Than One Major

Overall, 87% of the students seeking baccalaureate degrees had a single major, while the remaining 13% were enrolled in two, three or four different majors. This represents a 2% decrease in the number of students with multiple majors when compared to the last four years.

Student Enrollment in Associate, Baccalaureate, and Graduate Level Degree Programs

The five most predominant associate degree majors were Nursing, followed by Pre-Nursing, General Studies, Pre-Dental Hygiene, and Respiratory Care. Students enrolled in these majors accounted for more than 85% of the 27 associate level degree programs (see Attachment II, Table 1). Business Management, Biology, Elementary Education, Psychology, and Nursing were the five most predominant baccalaureate degree majors, and accounted for 26% of the 285 baccalaureate level degree programs. These majors have remained consistently in the top five for the past five years (see Attachment II, Table 2). The five most predominant graduate/professional degree majors were Educational Administration, Curriculum and Instruction, Law, Business Administration, and Counseling and Human Resource Development. Enrollments in these majors accounted for 29% of the 111 graduate/professional level majors. Except for a decrease in those enrolled in Administrative Studies, the number of students enrolled in these majors have remained consistent over the past five years (see Attachment II, Table 3).

Major Enrollment Trends During Past Five Years

Seven baccalaureate level majors experienced at least a 13% increase in enrollments when comparing data from 2003-04 and 2007-08 for those degree programs with more than 300 majors (see Attachment II, Figure 2 and 3). These included Business Management (51%), Sociology (20%), Nursing (19%), Psychology (17%), Accounting (13%), English (13%), and Political Science (13%). Three majors experienced at least a 17% decrease including Computer Science (26%), Electrical Engineering (18%), and Elementary Education (17%). At the graduate/professional level (see Attachment II, Figure 4 and 5), four majors experienced at least a 7% increase in enrollment. Nursing (58%) noted the largest enrollment increase, followed by English (38%), Education Administration (21%), and Biology (7%). The largest decrease was Computer Science with 27% fewer majors when compared with 2003-04 data. Many of these changes can be attributed to changes in programs offered across the system.

Majors with Enrollment Limits and Majors with Fewer than 20 Students Enrolled

Twenty majors across three Regental Institutions have enrollment limits as a result of resource constraints, priorities, pedagogical reason, or lack of clinical sites. Established enrollment limits are reported in Attachment II, Table 4. A number of majors have fewer than 20 students enrolled including 14 associate level majors (see Table 5), 86 baccalaureate level majors (see Table 6), and 52 graduate/professional level majors (see Table 7).

2007-08 Major Enrollment Report

The *Major Enrollment Report* provides enrollment data from the Census Date extract for the Fall 2007, Spring 2008, and Summer 2008 terms for majors leading to a degree at one of the six Regental Institutions. Students are counted if they are enrolled for at least one course, were classified as "degree-seeking," or had declared a major at either the associate, baccalaureate, and/or graduate/professional level. To achieve unduplicated counts, extracts for all three terms were combined and duplications eliminated. Students with more than one approved major are included in the total for each major, and enrollment counts for majors are rolled together to represent a system total. Using data provided by the Regents Information System (RIS), the report is divided into five sections to depict: 1) the number of students enrolled in associate, baccalaureate, and graduate level majors across Regental Institutions; 2) the number of students with more than one major; 3) major enrollment trends in baccalaureate and graduate level majors during the past four years; 4) majors with fewer than 20 students; and 5) majors with enrollment limits across Regental Institutions.

Students Enrolled in Associate, Baccalaureate, and Graduate Level Degree Programs

Associate level major enrollments across the six Regental Institutions included 2,246 students declared in at least one of 27 associate level degree programs. The associate degree students in Nursing at USD represented 27% of the students enrolled at the associate level, and 31% (695 of the 2,246 students) were represented as students pursuing admission into a program with enrollment limits, and currently completing general education or supporting coursework. Other majors represented in the top five highest enrollments included majors in Pre-Nursing (31%), followed by General Studies (18%), Pre-Dental Hygiene (5%), and Respiratory Care (4%).

Table 1
Associate Level Major Enrollments

<i>Title of Major</i>	<i>Institution</i>	<i>2003-04</i>	<i>2004-05</i>	<i>2005-06</i>	<i>2006-07</i>	<i>2007-08</i>
Nursing	USD	549	1,172	1,065	759 ⁱ	599
Pre-Nursing*	USD	**	**	148	610	695
General Studies	SYSTEM	465	495	496	439	410
Pre-Dental Hygiene*	USD	**	85	143	114	132
Respiratory Care	DSU	53	60	74	86	81
Dental Hygiene	USD	75	62	61	60	64
Business Management	DSU	46	40	44	46	51
Business	NSU	70	66	66	68	48
General Agriculture	SDSU	59	37	48	51	46
Health Info. Technology	DSU	33	35	44	44	44
Paraprofessional Education	BHSU, NSU	8	14	34	46	35
Office Management	DSU	11	8	9	11	12
Drafting Technology	BHSU	25	17	17	11	6
Applications Programming	DSU	20	9	7	8	8
Social Services	NSU	12	10	5	5	5
Commercial Art	NSU	9	4	5	4	5
Multi-Media Design	NSU	8	6	5	3	2
Undeclared	NSU	**	3	2	1	1
Web Administration	BHSU	15	17	7	3	1
Desktop Publishing	NSU	4	2	1	2	1
Administrative Assistant	BHSU	11	13	8	1	0
Network Administration	BHSU	22	12	9	3	0
Network Administration	NSU	7	4	2	3	0

*Note: * represents an associate degree that includes students with a Tracking for Admissions (TA) status. Prior to admission into the program, which has enrollment limits, students may take general education or supporting coursework. They are identified with a Tracking for Admission (TA) status.*

Baccalaureate Level Major Enrollments

Baccalaureate level major enrollments across the six Regental Institutions included 26,781 students declared in at least one of 285 baccalaureate level degree programs. For reporting purposes, students with more than one approved major are included in the total for each major, and enrollment counts for majors are rolled together within each level. For example, at some universities, a major in English may be completed as part of more than one baccalaureate degree (B.A., B.S., B.S.Ed.). Instead of reporting English major enrollments individually for each degree program, enrollments are reported together. Twenty-two baccalaureate majors had a total of 300 or more students across the system this past year, 20 of which had 300 or more enrolled during the past four academic years (see Table 2). When examining five-year averages depicted in Table 2, each of the five most populated majors averaged over approximately 1,000 students. Enrollment counts for the 2007-08 academic year indicate that Business Management (2,019 majors) held the largest enrollment for the system, followed by Biology (1,347 majors), Elementary Education (1,270 majors), Psychology (1,148 majors), and Nursing (1,140 majors). When comparing five-year averages across each of these five majors, similar trends existed except for Business Management and Elementary Education, whereby Elementary Education experienced a 17% decrease in student enrollments when comparing data from 2003-04 and 2007-08.

Table 2
Baccalaureate Level Major Enrollments Exceeding 300 Students Across the Regental Institutions

<i>Title of Major</i>	<i>2003-04</i>	<i>2004-05</i>	<i>2005-06</i>	<i>2006-07</i>	<i>2007-08</i>	<i>5 Year Average</i>
<i>Business Mgmt./Related</i>	1,339	1,351	1,448	1,718	2,019	1,575
<i>Biology</i>	1,253	1,259	1,329	1,335	1,347	1,304
<i>Elementary Education</i>	1,523	1,445	1,329	1,319	1,270	1,377
<i>Psychology</i>	980	1,035	1,072	1,106	1,148	1,068
<i>Nursing</i>	959	869	922	1,053	1,140	989
<i>Mass Comm./Journalism</i>	814	774	754	754	774	774
<i>Mechanical Engineering</i>	661	707	725	711	713	703
<i>History</i>	558	638	658	652	624	626
<i>Sociology</i>	515	533	552	593	617	562
<i>English</i>	498	521	544	527	565	531
<i>Computer Science</i>	562	473	420	418	403	455
<i>Art</i>	385	364	422	401	401	395
<i>Civil Engineering</i>	430	462	438	458	436	455
<i>Political Science</i>	391	414	412	471	443	415
<i>Accounting</i>	339	358	396	375	382	370
<i>Electrical Engineering</i>	357	353	324	318	**	338
<i>Physical Education</i>	331	337	371	368	367	355
<i>Special Education</i>	329	317	352	358	349	341
<i>Mathematics</i>	341	319	351	347	351	341
<i>Criminal Justice Studies</i>	315	330	333	328	332	327
<i>Early Childhood</i>	336	319	301	**	322	319
<i>Animal Sciences</i>	**	316	316	321	342	324

Note: Cells marked with “**” represent academic years when fewer than 300 majors were reported for a particular degree area. Such distinctions are noted when calculating 4 year averages for these degree areas.

Graduate/Professional Level Major Enrollments

Graduate/Professional level major enrollments across the six Regental Institutions included 4,946 students declared in at least one of 111 graduate/professional level majors. Sixteen graduate/professional majors had a total of 100 or more students across the system in any one of the past five academic years (see Table 3). The five most popular majors averaged approximately 200 students. Enrollment counts for the 2007-08 academic year indicate that Education Administration (511 majors) reported the largest student enrollments, followed by Curriculum and Instruction (279 majors), Business Administration (230 majors), Law (229 majors), and Medicine (205 majors). When comparing five year averages across each of these five majors, similar trends existed except for Business Administration and Counseling and Human Resource Development. Each of these majors have experienced at least an 7% decline in student enrollments. Business Administration has experienced an 6% decline in student enrollments when comparing data from 2003-04 and 2007-08.

Table 3
Graduate/Professional Level Major Enrollments Exceeding 100 Students Across the Regental Institutions

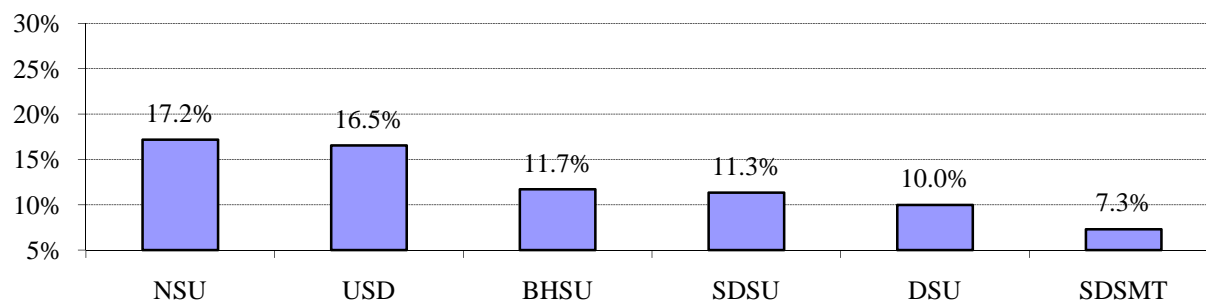
<i>Title of Major</i>	<i>2003-04</i>	<i>2004-05</i>	<i>2005-06</i>	<i>2006-07</i>	<i>2007-08</i>	<i>5 Year Average</i>
<i>Education Administration</i>	423	457	450	476	511	463
<i>Curriculum and Instruction</i>	320	322	326	307	279	311
<i>Business Administration</i>	245	238	212	213	230	228
<i>Law</i>	256	251	257	240	229	247
<i>Medicine</i>	202	201	207	204	205	204
<i>Couns. & Human Devel.</i>	221	226	214	214	201	215
<i>Administrative Studies</i>	215	214	234	201	197	212
<i>Comp. Science/Info. Systems</i>	191	166	146	155	184	168
<i>Biology/Biological Sciences</i>	168	179	198	192	180	183
<i>Engineering</i>	165	161	152	153	155	157
<i>Counseling & Psych. in Ed.*</i>	144	177	164	139	142	153
<i>Computer Ed./Tech. in Ed.</i>	131	126	151	127	111	129
<i>Pharmacy</i>	117	116	114	121	122	118
<i>Nursing</i>	102	136	145	159	161	141
<i>English</i>	77	86	102	94	98	91
<i>Health, Phys. Ed. & Rec.</i>	101	102	86	90	100	96

*Note: * Formerly titled Educational Psychology & Counseling prior to 2003-04.*

Students Enrolled in More Than One Major

Across the six Regental Institutions, 87% of the students seeking a baccalaureate degree had a single major during the 2006-07 academic year. This percentage is slightly higher than what has been reported during the past four academic years. The remaining 13% of the students were enrolled in either two (12%), three (1%), or four majors (0.1%) at their respective institution. NSU had the highest percentage of students enrolled in more than one major with 17% of their students followed by USD, DSU, BHSU, SDSU, and SDSMT (see Figure 1).

Figure 1
Percentage of Students Pursuing More than One Major by Institution



Note: The counts of students' multiple majors are cumulative throughout the academic year and may reflect students changing their majors throughout the year.

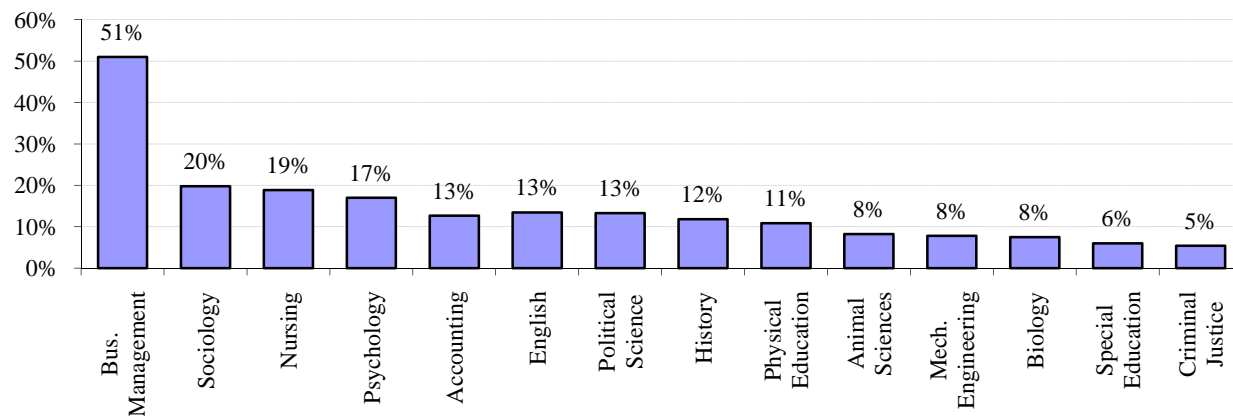
Major Enrollment Trends During Past Four Years

Data depicted in Tables 2 and 3 report enrollment data for 2007-08, as well as data for the four previous academic years at the baccalaureate and graduate/professional level. To evaluate major enrollment trends during this time period, enrollment numbers for 2007-08 were subtracted from those reported for the 2003-04 academic year. This information was then used to evaluate the percentage increase or decrease associated with each major across the Regental Institutions that accounted for more than 300 (baccalaureate) and 100 (graduate/professional) students. The results for each major enrollment level are reported in Figures 2 through 5.

Baccalaureate Level Five-Year Enrollment Trends

During the past five years, six majors have experienced at least a 13% increase in enrollment when comparing 2002-03 and 2006-07 enrollment data. Data indicates a 51% increase in the number of Business Management majors across the system, as well as a 20% increase in Sociology majors, 19% increase in students enrolled in Nursing, 17% for Psychology, and 13% for Accounting, English and Political Science. Seven other majors demonstrated at least a 5% increase in student enrollments during this same time period.

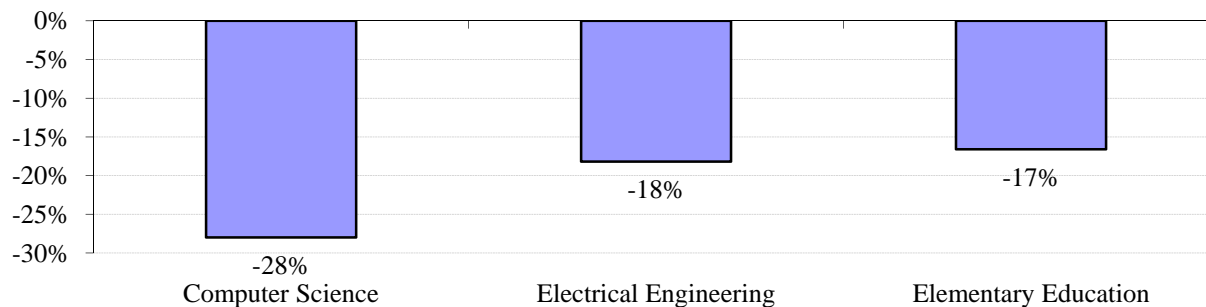
Figure 2
Baccalaureate Level Majors Experiencing a 5% Increase in Enrollments During Past Five Years



Three majors experienced at least a 17% decrease in enrollment when comparing 2003-04 and 2007-08 enrollment data. Computer Science reported the largest decrease in enrollment, declining by 28% in a five-year period, followed by Electrical Engineering (18%) and Elementary Education (17%) (see Figure 3).

Figure 3

Baccalaureate Level Majors Experiencing a 5% Decrease in Enrollments During the Past Five Years

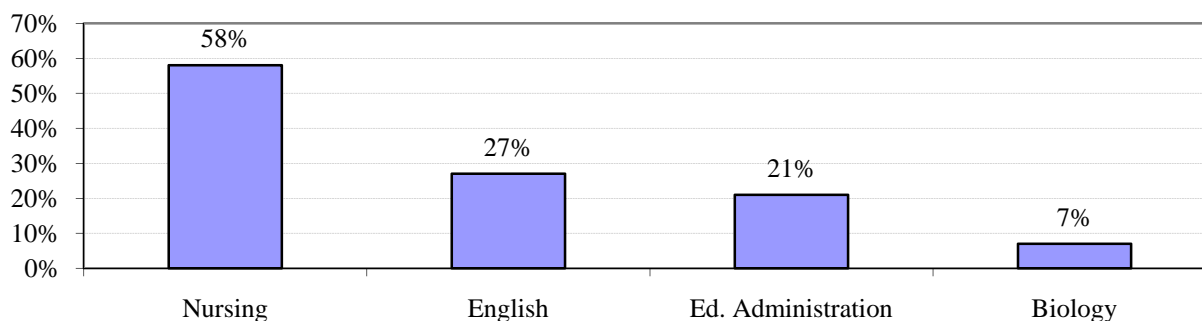


Graduate/Professional Level Five-Year Enrollment Trends

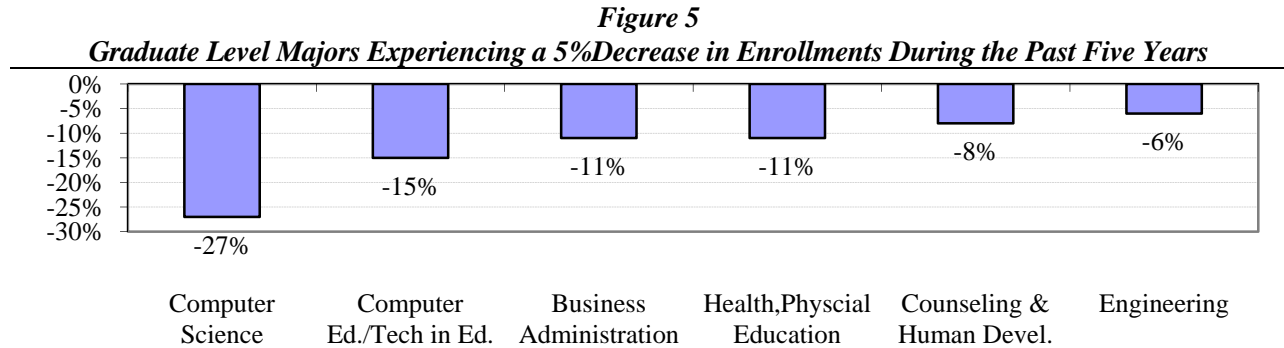
During the past five years, three graduate/professional level majors experienced at least a 21% increase in enrollment when comparing 2003-04 and 2007-08 enrollment data. Data indicates a 58% increase in the number of graduate level Nursing majors across the system, as well as a 27% increase in students enrolled in English, and a 21% increase for Education Administration. Biology demonstrated at least a 5% increase in student enrollments during this same time period (see Figure 4).

Figure 4

Graduate Level Majors Experiencing a 5% Increase in Enrollments During the Past Five Years



Computer Science reported the largest decrease in graduate level enrollment, declining by 27% in a five-year period, while Computer Education/Technical Education (15%), Business Administration and Health, Physical Education and Recreation (11%) each declined at least 10%. Two other majors including Counseling and Human Development (8%) and Engineering (6%) also experienced slight enrollment declines (see Figure 5).



Majors With Enrollment Limits

Twenty-two programs across three Regental Institutions have enrollment limits as a result of resource constraints, institutional priorities, pedagogical reasons, or lack of clinical sites. Students are admitted up to a predetermined number and other applicants are denied admission. Established limits for each major are reported in Table 4.

Majors with Fewer than 20 Students Enrolled

A number of majors have fewer than 20 students enrolled including 15 associate level majors (see Table 5), 104 baccalaureate level majors (see Table 6), and 54 graduate/professional level majors (see Table 7).

Table 4
Programs with Enrollment Limits

University & Major/Degree	Established Limits
Dakota State University	
<i>Respiratory Care: AS</i>	<ul style="list-style-type: none"> • Clinical portion limited to 16 students in Sioux Falls and 8 students in Rapid City
<i>Respiratory Care: BS</i>	<ul style="list-style-type: none"> • Clinical portion limited to 8 students in Sioux Falls and 6 students in Rapid City
South Dakota State University	
<i>Athletic Training: BS</i>	<ul style="list-style-type: none"> • 36 students any one semester in clinical portion of major
<i>Nursing: BS standard</i>	<ul style="list-style-type: none"> • 80 students each semester Brookings; 48 students every semester at West River center in Rapid City
<i>Nursing: BS accelerated</i>	<ul style="list-style-type: none"> • 48 students annually
<i>Nursing: Ph.D.</i>	<ul style="list-style-type: none"> • 12 every other (odd) year
<i>Pharmacy: Pham.D.</i>	<ul style="list-style-type: none"> • Enrollment limit is 70 taken each year into the professional portion of the program
University of South Dakota	
<i>Special Education, Elementary Education, & Secondary Education: BSED</i>	<ul style="list-style-type: none"> • Capped at 180 students for all three teacher ed. programs
<i>Counseling & Psychology in Ed.: Ph.D.</i>	<ul style="list-style-type: none"> • 16 admitted per year (consisting of: 8 in Counseling, 4 in School Psychology, and 4 in Educational Psychology)
<i>Counseling and Psychology in Ed.: MA</i>	<ul style="list-style-type: none"> • 30 admitted per year
<i>School Psychology: ED.S.</i>	<ul style="list-style-type: none"> • 12 admitted per year
<i>Clinical Psychology: Ph.D.</i>	<ul style="list-style-type: none"> • 9 admitted per year
<i>Art: MFA</i>	<ul style="list-style-type: none"> • Capped at 15 students
<i>Dental Hygiene: A.S.</i>	<ul style="list-style-type: none"> • 32 admitted per year
<i>Physician Assistant Studies: M.S.</i>	<ul style="list-style-type: none"> • 20 admitted per year
<i>Medicine: MD</i>	<ul style="list-style-type: none"> • 50 admitted per year
<i>M.D./Ph.D. Program</i>	<ul style="list-style-type: none"> • 4 admitted per year
<i>Nursing: A.S.</i>	<ul style="list-style-type: none"> • Capped at 476 (Including Pierre, Rapid City, Sioux Falls, and Vermillion Campuses)
<i>Physical Therapy: D.P.T.</i>	<ul style="list-style-type: none"> • 26 new students each year
<i>Occupational Therapy: M.S.</i>	<ul style="list-style-type: none"> • 26 new students each year
<i>Audiology: Au.D.</i>	<ul style="list-style-type: none"> • 5 admitted per year*
<i>Speech-Language Pathology: M.A.</i>	<ul style="list-style-type: none"> • 20 per academic year; 10 in summer*

Note: *Effective Summer 2007

Table 5
Majors at Associate Level with Enrollments of 20 Students or Less

<i>Institution & CIP</i>	<i>Major</i>	<i>Title of Major</i>	<i>2003-04</i>	<i>2004-05</i>	<i>2005-06</i>	<i>2006-07</i>	<i>2007-08</i>	<i>Comments</i>
BHSU								
520401	BADMA	Administrative Assistant	11	13	8	1	0	Elimination recommended with fall 05
110101	BWBAD	Web Administration	15	17	7	3	1	Elimination recommended with fall 05
110101	BNTAD	Network Administration	[22]	12	9	2	0	Inactive from Fall 2005
151301	BDRFT	Drafting Technology	[25]	17	17	11	6	Intent to plan Industrial Technology
DSU								
520204	DOFFM	Office Management	11	8	9	11	12	shares courses with the BBA program
110201	DAPPL	Applications Programming	20	9	7	8	8	Shares courses with BS in Computer Info. Systems
NSU								
500402	NCOART	Commercial Art	9	4	5	4	5	Under re-evaluation for possible elimination
100303	NDKPUB	Desktop Publishing	4	2	1	0	1	Under re-evaluation for possible inclusion in new initiatives
500402	NMMWB	Multi-Media Design	8	6	5	3	2	Under re-evaluation. The numbers have diminished because the creation of a 4 year program has siphoned students away from 2 year degree. However, there is no negative impact on course enrollments since these students are enrolled in the same foundation courses as the 4 year students
110901	NNTAD	Network Administration	7	4	2	1	0	Program is discontinued.
131501	NPAED	Paraprofessional Education	5	6	8	8	11	New program in 2002 & we are working to increase enrollment
440701	NSSER	Social Services	12	10	5	5	5	Under re-evaluation for possible elimination
USD								
240102	UGENS	General Studies	2	12	17	15	19	System wide program of general education and electives. No specifically devoted resources

Table 6
Majors at Baccalaureate Level with Enrollments of 20 Students or Less

<i>Institution & CIP</i>	<i>Major</i>	<i>Title of Major</i>	<i>2003-04</i>	<i>2004-05</i>	<i>2005-06</i>	<i>2006-07</i>	<i>2007-08</i>	<i>Comments</i>
BHSU								
050202	BAIS	American Indian Studies Prog	17	[25]	[22]	16	19	Relatively new program, need to support local community
150612	BATS	Applied Technical Science	13	13	11	10	7	This program is a joint agreement with the technical institute
520201	BBED	Business Education	16	10	18	12	13	responds to student need
520301	BAC-C	Composite Accounting	46		12	6	2	Elimination recommended in 2006
230101	BEN-C	Composite Comm/English	11	12	12	9	8	Cost efficient program that provides valued choice for some students
131316	BSC-C	Composite in Science Teaching	2	6	3	6	9	New program, shares coursework with science majors & minors
500901	BIM-C	Composite Instrumental Music	10	8	8	13	12	Needed program for music teaching majors
131311	BMS-C	Composite Math & Science Teaching	1	3	2	2	6	New program, shares coursework with science/math majors & minors
150603	BTC-C	Composite Technology	19	20	14	13	4	Continued growth expected.
500901	BVM-C	Composite Vocal Music	8	11	9	12	11	Needed program for music teaching majors
131203	BMDSC	Middle School	16	[24]	[25]	8	5	Recommended to be eliminated
400101	BPS-C	Composite Science/Physical	9	7	5	4	4	Being eliminated - in process
520701	BENST	Entrepreneurial Studies	13	7	5	4	2	Modified curriculum to attract students
150612	BITED	Industrial Technology Educ			1	3	5	Responds to student need
520903	BTH-C	Tourism & Hospitality Mgt Comp	20	7	3	0	1	Recommended to be eliminated
521001	BHR-C	Composite Human Resources	16	10	4	1	1	Recommended to be eliminated
450101	BSOCS	Social Science	[22]	14	17	18	17	Cost efficient program that provides valued choice for some students
409999	BEP-C	Environmental Physical Science	[25]	17	14	19		Cost efficient program that provides valued choice for some students
310504	BEXSC	Exercise Science					1	NEW title for Wellness Degree
231001	BSP-C	Composite Comm/Speech					2	
DSU								
269999	DBIOL	Biology	8	9	15	10	7	Shares courses with Biol Info Systems
520201	DBED	Business Education	14	11	10	6	7	Shares courses with BBA & Computer Ed majors
239999	DENGL	English	15	16	19	17	[23]	Shares courses with English Info Systems
279999	DMATH	Mathematics	14	20	19	15	11	Shares courses with Math Info Systems
400101	DPHYSC	Physical Science	12	13	6	12	11	Shares courses with Physical Science Education
131316	DPHSE	Physical Science Education			3	2	0	Shares courses with Physical Science
520301	DPACT	Professional Accountancy	16	13	17	17	9	Shares courses with BBA Accounting major
410301	DSCFT	Scientific Forensic Tech		1	19	19	[23]	Program officially started Fall 2005, student declared major Sprg 05
110101	DCOME	Computer Education					12	Shared courses with CSC/CIS/ED majors.
110103	DECMS	Ecommerce & Computer Security					12	Major renamed to Computer and Network Security.
110401	DMIS	Management Information Systems	[23]	14	12	12	17	Shares courses with BBA and Computer Info Systems

Table 6 Continued
Majors at Baccalaureate Level with Enrollments of 20 Students or Less

<i>Institution & CIP</i>	<i>Major</i>	<i>Title of Major</i>	<i>2003-04</i>	<i>2004-05</i>	<i>2005-06</i>	<i>2006-07</i>	<i>2007-08</i>	<i>Comments</i>
<i>NSU</i>								
440201	NCSER	Community Services	2	4	3		2	Though listed as a separate degree, this is essentially a specialization within the Sociology program
131303	NEBED	E-Business Education	8	6	8	0	11	New program 02/03. Program enrollment is being monitored.
450601	NECON	Economics	13	13	14	0	[28]	Current number of majors reported at 18. Faculty used to support required economic courses in other majors. Little or no cost associated with offering major
160901	NFSC	French Studies	4	4	3	4	2	Cooperative major with SDSU, USD, & University Center. Collaboration provides language opportunities for multiple students
160501	NGERM	German	4	5	4	7	5	Cooperative major with SDSU & USD. Collaboration provides language opportunities for multiple students
511005	NMEDT	Medical Technology	4	7	9	3	13	Under re-evaluation. The Healthcare Workforce Summit indicates growth potential with increased local internship opportunities
160905	NSPAN	Spanish	15	19	[20]	1	12	Local data indicates no program longer low enrolled. Program is also necessary to support NSU's International Business and Education students
231001	NSPCM	Speech	15	18	[20]	12	[28]	The major is growing, and we have this year taken steps to ensure that it continues to grow, including the new Public Relations emphasis
310504	NFMGT	Fitness Management	29	26	24	14	10	
440201	NCDEV	Community Development					1	
451101	NSOC	Sociology					1	
310501	NHPF	Human Performance & Fitness					3	
<i>SDSMT</i>								
270101	MMATH	Mathematics	37		6	1	0	The math program was revised as an applied and computational mathematics program and a new code assigned. These are students who are completing the old program requirements. The 6 in 2005-06 were students who sat out and returned in fall 2005
142101	MMINE	Mining Engineering	9	4	2	1	1	This program is being phased out and replaced by the new program in Mining Engineering and Management which has 57 declared majors as of the fall 2006 census date.
<i>SDSU</i>								
010103	SAGRE	Agricultural & Resource Economics	11	14	11	10	9	New Name
90401	SAGJR	Agricultural Journalism	8	14	19	13	19	Larger if viewed as part of Journalism - College is looking at major curriculum revision
150603	SATS	Applied Technical Science	9	14	15	11	11	(Approved 3/2000); Gradually becoming recognized
141201	SEPHY	Engineering Physics	9	8	10	10	8	Traditionally a small and rigorous major
160901	SFSC	French Studies	8	5	13	15	11	Cooperative major with NSU & USD. Total of 14 in AY 02-03, 16 in AY 03-04, 13 in AY 04-05, 19 in AY05-06, and 26 in AY 06-07 for 3 institutions, Making progress

Table 6 Continued
Majors at Baccalaureate Level with Enrollments of 20 Students or Less

<i>Institution & CIP</i>	<i>Major</i>	<i>Title of Major</i>	<i>2003-04</i>	<i>2004-05</i>	<i>2005-06</i>	<i>2006-07</i>	<i>2007-08</i>	<i>Comments</i>
SDSU								
400801	SPHYS	Physics	18	[22]	18	18	[21]	Traditionally a small and rigorous major - part of cooperative effort with SDSMT & USD. Total of 60 in AY 02-03, 54 in AY 03-04, 62 in AY 04-05, 61 in 05-06, and 56 in 06-07 for 3 institutions
150703	SSAFM	Safety Management		1		3	2	New Program in 2002, Will be reviewed by College and Department
260202	SBICM	Biochemistry				5	12	New major in 2006
131319	SCTE	Career & Technical Education				17	9	Small program preparing TI and other TE faculty
310101	SPURE	Public Recreation					9	Now part of a combined major
160501	SGERM	German					18	Cooperative program with specializations (USD, SDSU, NSU) has 37
310301	SPR	Park Management					19	Now part of a combined major with specialization
USD								
50202	UAIS	American Indian Studies	13	13	17	19	19	Program being reorganized with new infusion of resources and greater focus on diversity recruitment. New chairperson hired in fall 2008.
131322	UBIOE	Biology Education	4	3	2	5	7	Content area degree for Secondary Education Certification. Sec Ed as a group has 40-60 students each semester
131323	UCHED	Chemistry Education			1	1	1	Content area degree for Secondary Education Certification. Sec Ed as a group has 40-60 students each semester.
230101	UENED	English Education	11	14	13	9	18	Content area degree for Secondary Education Certification. Some English Ed students pursue it as a minor. Sec Ed as a group has 40-60 students each semester.
160901	UFSC	French Studies	2	4	3	7	19	Cooperative program with NSU & SDSU.
450801	UHSED	History Education	13	13	14	14	18	Content area degree for Secondary Education Certification. Sec Ed as a group has 40-60 students each semester
240101	ULIBS	Liberal Studies	14	8	5	8	4	This is an interdisciplinary major that caters to a very few self-directed students with non-traditional academic needs. It is administered through the A&S dean's office and involves no additional resources
USD								
270101	UMTED	Mathematics Education	11	15	10	15	18	Content area degree for Secondary Education Certification. Sec Ed as a group has 40-60 students each semester
400801	UPHYS	Physics	17	18	18	13	13	Part of cooperative effort with SDSMT & SDSU.
131330	USNED	Spanish Education	3	3	6	8	7	Content area degree for Secondary Education Certification. Sec Ed as a group has 40-60 students each semester
500501	UTHED	Theatre Education	2	5	3	3	3	Not a separate program. Students complete the BFA theatre requirements in the College of Fine Arts and teacher certification through the School of Education

Table 6 Continued
Majors at Baccalaureate Level with Enrollments of 20 Students or Less

<i>Institution & CIP</i>	<i>Major</i>	<i>Title of Major</i>	<i>2003-04</i>	<i>2004-05</i>	<i>2005-06</i>	<i>2006-07</i>	<i>2007-08</i>	<i>Comments</i>
USD								
451001	UPSED	Political Science Education		1	1	3	4	Content area degree for Secondary Education Certification. Sec Ed as a group has 40-60 students each semester
510912	UPAST	Physician Assistant Studies	32	12	1	0	1	This program is now at the master's level, and the BS will be eliminated. The single student still in the program completed the certificate program years ago and has been working as a licensed PA. He is now finishing up the general education courses needed for the baccalaureate.
380101	UPHIL	Philosophy	19	18	16	19	[22]	New faculty reinvigorating major
160901	UFREN	French	2	4	4	1	5	

Table 7
Majors at Graduate/Professional Level with Enrollments of 20 Students or Less

<i>Institution & CIP</i>	<i>Major</i>	<i>Title of Major</i>	<i>2003-04</i>	<i>2004-05</i>	<i>2005-06</i>	<i>2006-07</i>	<i>2007-08</i>	<i>Comments</i>
BHSU								
26.0802	BIG	Integrative Genomics				4	7	Program will maintained at 10 students maximum due to funding
520201	BBSM	Business Services Management					13	
DSU								
130501	DCET	Computer Education & Technolog	49		9	1	1	Program renamed to Computer Technology
111003	DINFA	Info Assurance & Comp Security		17	[24]	15	20	Fall 04 program started.
NSU								
130501	NELDN	E-Learning Design & Instruct	1		3	0	0	Re-evaluation is underway.
111099	NELTA	E-Learning Tech & Admin	17	12	2	6	13	We are hoping to build enrollment. Re-evaluation is underway.
SDSMT								
30104	MAEWR	Atmos, Environ, Water Resource	15	15	9	4	2	This program is phased being phased out and replaced by the AES program This program officially began in fall 2005
400401	MAES	Atmospheric & Environmental Sci			3	4	5	
400401	MATM	Atmospheric Sciences	18	13	14	17	12	Enrollment in this MS program have increased slightly. The redesigned B.S. in Interdisciplinary Science has an atmospheric science track that will provide a feeder into this M.S. program
143901	MGELE	Geology/Geological Engineering	13	12	9	8	6	Enrollments in this PhD program are limited by availability of externally funded GRA positions
141801	MNANO	Nanoscience & Nanoeng.		2	8	11	12	This program officially began in fall 2005
141801	MMES	Materials Engineering & Science	19	18	13	[43]	14	Enrollments in this PhD program are limited by availability of externally funded GRA positions
110101	MCSC	Computer Science	34	20	19	17	12	Enrollments have been impacted by declines in the industry as well as by decreased in international students
400604	MPALE	Paleontology	16	10	14	17	20	This is the only MS in Paleontology in the US
140501	MBMDE	Biomedical Engineering				8	13	This program officially began in fall 2006
141901	MME	Mechanical Engineering	34	24	22	19	17	Engineering masters program enrollments nationally vary inversely with the job market which is currently strong. Competition from other universities with higher GRA and GTA salaries makes recruitment challenging
140701	MCHE	Chemical Engineering	33	20	24	16	8	Engineering masters program enrollments nationally vary inversely with the job market which is currently strong. Competition from other universities with higher GRA and GTA salaries makes recruitment challenging
140701	MCBE	Chemical and Biological Engr					6	

Table 7
Majors at Graduate/Professional Level with Enrollments of 20 Students or Less

<i>Institution & CIP</i>	<i>Major</i>	<i>Title of Major</i>	<i>2003-04</i>	<i>2004-05</i>	<i>2005-06</i>	<i>2006-07</i>	<i>2007-08</i>	<i>Comments</i>
SDSU								
	SAGRO	Agronomy	6	7	6	5	5	Small program limited by funds and GRA positions
011102								
	SANSC	Animal Science	6	9	7	6	7	Small program limited by funds and GRA positions
010901								
	SAEWR	Atmos, Environ, Water Resource	12	14	6	4	4	Being replaced by SGSE
030104								
400501	SCHEM	Chemistry	7	7	8	8	10	Emphasis placed on PhD
270303	SCSS	Computational Sci & Stats			5	7	12	New in 2005
260502	SMICR	Microbiology	1	1	1	0	0	Replaced by MS Biological Sciences
511601	SNURS	Nursing			13	11	20	New 2005, Limits placed on enrollment
451101	SRSOC	Rural Sociology	13	14	13	11	14	Emphasis placed on PhD
	SEE	Electrical Engineering				3	11	New 2006
512001	SPHS	Pharmaceutical Sciences				11	14	New 2007
030601	SWL	Wildlife & Fisheries Sciences					17	New doctoral program in 2007
USD								
510202	UAUD	Audiology			9	11	14	This is a capped program due to the intensive clinical component
260101	UBIOS	Biological Sciences	8	9	10	14	16	Collaborative program with SDSU. Will be looking at ways to optimize potential through more focused and coordinated research programs
500701	UART	Art	14	14	12	12	12	Program capped due to limited studio space.
400501	UCHEM	Chemistry	8	14	13	17	17	Integral to research-active department and critical to EPSCor. Home of a 2010 Research Center. Recipient of \$2.97M NSF grant for Northern Plains Undergraduate Research Center, which will feed the pipeline for graduate study
270303	UCSS	Computational Science & Stats			6	8	7	This program was approved with the acknowledgement that only a few students would be admitted each year
130301	UCI	Curriculum and Instruction	7	3	7	0	7	6th year Specialist program between MA & EdD. Normally has only 5-8 students
500902	UHSMI	History of Musical Instruments	1	2	5	0	NA	This is a specialization within the MM degree.
140501	UBMDE	Biomedical Engineering					3	New PhD Program in collaboration with SDSMT
400599	UMCHM	Materials Chemistry					4	New PhD program
130501	UTET	Technology for Ed & Training					6	The EDS program was put on inactive status last year. These few students are finishing up their degrees.
511401	UPHST	Physician Scientist					6	New limited enrollment PHD program
260102	UBMDS	Biomedical Sciences					9	New PhD Program
131205	USEED	Secondary Education					11	Most students now opt to complete the certification-only undergraduate program rather than this program.
								Under review
110101	UCSCI	Computer Science					16	

Table 7
Majors at Graduate/Professional Level with Enrollments of 20 Students or Less

<i>Institution & CIP</i>	<i>Major</i>	<i>Title of Major</i>	<i>2003-04</i>	<i>2004-05</i>	<i>2005-06</i>	<i>2006-07</i>	<i>Comments</i>	
<i>USD</i>								
270101	UMATH	Mathematics	14	14	11	9	11	The small number of available assistantships limits enrollment POLS MA students have most of their courses in common with either MPA or MSAS students.
451001	UPOLS	Political Science	[22]	11	12	15	11	
300101	UNS	Natural Science	6	6	4	4	3	The goal of the Masters of Natural Science Program is to provide secondary science teachers with a means to develop content knowledge in a discipline outside of their primary major, with an emphasis on providing content in chemistry and physics. As such this program seeks to address a very real need for both South Dakota and the surrounding area. The need for the program has increased as new requirements for teacher certification are implemented as the result of No Child Left Behind legislation. The cost of the program is relatively small, requiring a limited amount of summer salary to provide certain courses in the program. In addition, several courses are being considered for online/independent study, which will further reduce the cost of delivering the program Program's courses are regularly taken by graduate students from other disciplines, especially MSAS program, English, Business and MPA.
231001	USPCM	Speech Communication	13	16	18	[20]	16	
500501	UTHEA	Theatre	14	11	13	12	14	

ⁱ The decline in enrollment numbers for Nursing represents a change in coding practices for students admitted into the Nursing program at USD.